



HAWAIIAN PHILATELIC SOCIETY



Affiliate
#136

ORGANIZED 1911

P.O. Box 10115, Honolulu, HI 96816-0115 USA WEB SITE: hpshawaii.org EMAIL: hawaiistamps@hpshawaii.org

SEPTEMBER 11, 2023

President: Wayne Yakuma; 1st Vice-President: Glenn Yokoyama; 2nd Vice-President & Zoom Coordinator: Kurt Streepy; Treasurer: Jerry C. Coiner;
Secretary: Vacant; Auctioneer: Ben Gale; APS Representative: Phillip C. Mendel; Po'Oleka O Hawaii Editor: Gregory Chang; Membership Chair:
Gannon Sugimura; Bulletin Meister: Richard Yanagi

HPS Members Win Gold at GASS

Four HPS members won medals for their exhibits at the Cleveland APS Great American Stamp Show in August. There were 55 exhibits in the competition. Judges award exhibit medals based on points. The maximum possible for an exhibit is 100 points, with no exhibit receiving more than 97 points at **this** show. The prize-winning HPS exhibitors were:

Jeffery Erichson, "Engraved Hawaii Postage Issued 1864-1893," Large Gold, 94 pts.

Dennis Jackson, "Hawaii Post Cards to Germany 1882-1900," Gold, 88 pts.

Gannon Sugimura, "The Evolution of Hawaiian Circular Date Stamps to 1900," Gold, 88 pts.

Kurt Streepy, "The 1924 Arms Issue of Panama," Gold, 87 pts.

Well done to all four of our members.

Results of August 14, 2023 Auction. Lots not included are passed lots.

0801-\$5.00; 0802-\$16.00; 0803-\$8.00; 0804-\$15.00; 0805-\$16.00; 0806-\$20.00; 0807-\$40.00;
0808-\$2.50; 0809-\$10.00; 0810-\$7.00; 0811-\$22.00; 0812-\$13.00; 0813-\$3.25; 0814-\$210.00;
0815-\$130.00; 0816-\$130.00; 0817-\$320.00; 0818-\$290.00; 0819-\$290.00; 0820-\$310.00;
0821-\$2.25; 0822-\$4.25; 0823-\$47.50; 0825-\$4.25; 0826-\$5.50; 0827-\$4.00; 0828-\$8.50;
0829-\$3.50; 0830-\$6.50; 0831-\$4.75; 0832-\$6.00; 0833-\$7.50; 0834-\$3.25; 0835-\$9.50; 0836-
\$3.75; 0837-\$6.50; 0838-\$3.75; 0839-\$2.50; 0841-\$1.50; 0842-\$3.25; 0843-\$1.75; 0844-
\$20.00; 0845-\$20.00; 0846-\$0.25; 0847-\$3.00; 0848-\$2.25; 0849-\$0.25; 0850-\$0.25; 0855-\$4.00;
0856-\$7.00; 0857-\$12.00

LOT #	* / O	DESCRIPTIONS: (####) = VENDOR CODE; (*) = UNUSED; (O) = USED; (**) = UNUSED/NEVER HINGED; (OG) = ORIGINAL GUM; (DG) = DISTURBED GUM	CAT YEAR	CAT or RETAIL	UPSET
UNITED STATES of AMERICA					
901	O	#17 Vfine/Xfine; PF cert grade 85; Neat brown cancel; PF cert. #594115; Graded VF-XF 85 (PRL/2346)	2020	\$325.00	\$250.00
902	O	#77 F-VF; Heavy cancel on right edge obscures perfs (BAH/2344)	2022	\$175.00	\$45.00
903	O	#117 F-Vfine; Short perfs UL (BAH/2344)	2022	\$130.00	\$32.00
904		WITHDRAWN			
905	**	#233 Vfine; OG; NH; PSE Cert. Grade: VF 80, Mint OGnh, overall light toning (PRL/2346)	2021	\$150.00	\$70.00
906	*	#323-24 F-Vfine; LH; Clean stamps (PRL/2346)	2021	\$45.00	\$20.00
907	**	#372 Vfine; OG; NH (BRG/2343)	2020	\$25.00	\$8.50
908	*	#397 Vfine; OG; Very LH; Good centering (BRG/2343)	2020	\$15.00	\$4.50
909	*	#397-98 Xfine; LH; Nicely centered copies (PRL/2346)	2021	\$31.00	\$15.00
910	*	#401 Xfine; Very LH (PRL/2346)	2021	\$25.00	\$20.00
911	*	#480 F-Vfine; OG; HR (BRG/2343)	2020	\$170.00	\$55.00
912	O	#523 F-Vfine; PSE Cert. Grade: F-VF 75J, Used (PRL/2346)	2021	\$240.00	\$120.00
913	**	#647 Plate Block/4 F-Vfine; Gum a bit short at bottom (PRL/2346)	2020	\$180.00	\$80.00
914	**	#2394 Xfine; OG; NH (BAH/2344)	2022	\$16.00	\$7.00
915	**	#2719a Booklet sheet unfolded; Vfine; NH (BAH/2344)	2022	\$12.00	\$4.50
916	O	#4378//4873 (8) Vfine; Most very light cancel; Attractive high value lot (BAH/2344)	2022	\$90.50	\$20.00
917	**	C20 + C21; Vfine; NH; W/PSE certs. ; C20 Grade: F70, mint, Ognh; C21 Grade: VF80, mint, Ognh (BAH/2344)	2022	\$11.40	\$7.00
918	O	F1 F-Vfine (BAH/2344)	2022	\$14.00	\$4.00
919	O	O21 F-Vfine; Clean stamp (PRL/2346)	2021	\$25.00	\$10.00
920	**	Q6 F-Vfine; NH; Corner margin copy w/engraver's initials; faint gum bends (PRL/2346)	2021	\$90.00	\$40.00
921	O	UX35 Entire; Vfine; Pre-printed back (BAH/2344)	2022	\$37.50	\$10.00
922	**	WS2 Vfine; NG; NH; Beautiful fault free War Savings (PRL/2346)	2020	\$30.00	\$30.00



0901



0902



0903



0905



0906



0907



0908



0909



0910



0911



0913



0914



0915



0912



0916



0917



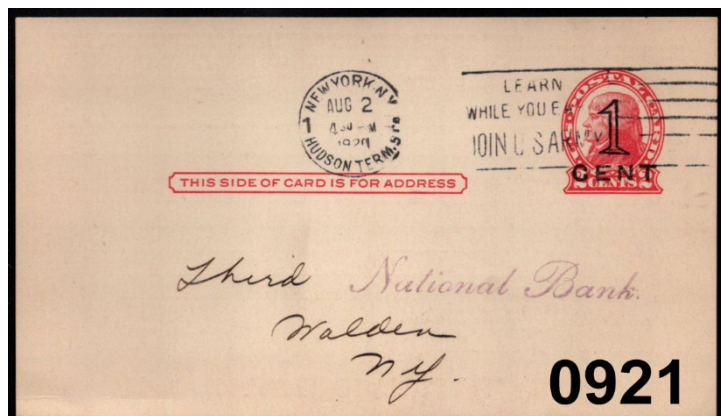
0918



0919



0920



0921



0922

LOT #	* / O	DESCRIPTIONS: (####) = VENDOR CODE; (*) = UNUSED; (O) = USED; (**) = UNUSED/NEVER HINGED; (OG) = ORIGINAL GUM; (DG) = DISTURBED GUM	CAT YEAR	CAT or RETAIL	UPSET
CONFEDERATE STATES of AMERICA					
923	**	#12 F-Vfine; NH; Partial imprint in bottom selvage "Ball, Ban.." (<i>Keatinge and Ball Printing</i>) (PRL/2346)	2021	\$20.00	\$5.00
924	**	#13 F-Vfine; NH; Horizontal crease not visible on face (PRL/2346)	2021	\$45.00	\$35.00
HAWAII					
925	O	#8 Vfine; HR; Thins; Scuffs; Tears; HPS Cert. #2957 (FSS/2347)	2020	\$750.00	\$85.00
926	*	#8 F-Vfine; PG; Thins; Tears; repaired top & lower right edge; HPS Cert. #2865 (FSS/2347)	2020	\$700.00	\$85.00
927	*	#22 Vfine; Plate 12-A, Type V, Pos. 9; PG; HR; Thins (BRG/2343)	2020	\$575.00	\$185.00
928	*	#27 F-VF; Regummed; Thins; Creases; HPS Cert. #2854 (FSS/2347)	2020	\$350.00	\$35.00
929	O	#28 F-Vfine; Thins; Scuffs; 7-bar grid of Lahaina, Maui; HPS Cert. #2965 (FSS2347)	2020	\$325.00	\$70.00
930	*	O1-O6 F-Vfine; OG; HR; Complete set (BRG/2343)	2020	\$300.00	\$135.00
HAWAIIAN TOWN POSTMARKS					
931	O	U2 Cut square; KEALAKEKUA, hawaii; POINP #282.011; Purple; R7; F-Vfine (SAI/2345)	2023	\$4.00	\$4.50
932	O	#43 KEKAHA, kauai; POINP #282.011; Black; R7; DATE: "AUG 29 1891"; Fine (SAI/2345)	2023	\$1.00	\$2.50
933	O	#52 KEKAHA, kauai; POINP #282.011; Black; R7; Vfine (SAI/2345)	2023	\$1.50	\$2.75
934	O	U2 Cut square; KEKAHA, KAUAI; POINP #282.011; Black; R7; SON; Full DATE: "DEC 5, 1891"; F-Vfine (SAI/2345)	2023	\$4.00	\$6.50
935	O	#75 KILAUEA, kauai; POINP #282.011; Purple; R7; Vfine (SAI/2345)	2023	\$0.60	\$2.50
936	O	#75 KIPAhulu, maui; POINP #282.011; Purple; R7; "Just" Fine (SAI/2345)	2023	\$0.60	\$3.00
937	O	#75 KOLOA, kaula; POINP #282.011; Purple; R7; Fine (SAI/2345)	2023	\$0.60	\$2.75
938	O	#75 LAUPAHOehoe, hawaii; POINP #281.01; Purple; R7; Fine (SAI/2345)	2023	\$0.60	\$3.75
939	O	U2 Cut Square; LAUPAHOEHOE, hawaii; POINP #282.011; Blue; R7; F-Vfine (SAI/2345)	2023	\$4.00	\$5.50
940	O	#75 mahuKONA, hawaii; POINP #281.01; Red; R7; F-Vfine (SAI/2345)	2023	\$0.60	\$3.75
941	O	#43 MAHUKOa, hawaii; POINP #282.016; Purple; R6; DATE: "Dec 28, 1889"; Fine (SAI/2345)	2023	\$1.00	\$4.25
942	O	#74 napOOPOO; hawaii; POINP #253.01; Purple; R6; F-Vfine (SAI/2345)	2023	\$1.00	\$2.75
943	O	#43 paAUILO, hawaii; POINP #281.013; Purple; R6; Fine (SAI/2345)	2023	\$1.00	\$1.75
944	O	#81 paPAIKOU, hawaii; POINP #255.01; Purple; R2; F-Vfine (SAI/2345)	2023	\$1.00	\$2.50
945	O	#76 PUNALUu, hawaii; POINP #281.01; Black; R5; F-VF (SAI/2345)	2023	\$2.00	\$3.75
GERMANY					
946	O	#366-84 (19) F-Vfine (BAH/2344)	2020	\$32.80	\$7.00



0923



0924



0925



0926



0927



0928



0929



0930



0931



0932



0933



0934



0935



0936



0937



0938



0939



0940



0941



0942



0943



0946



0944



0945



LOT #	* / O	DESCRIPTIONS: (####) = VENDOR CODE; (*) = UNUSED; (O) = USED; (**) = UNUSED/NEVER HINGED; (OG) = ORIGINAL GUM; (DG) = DISTURBED GUM	CAT YEAR	CAT or RETAIL	UPSET
947	*	#469 F-Vfine; Paper adhesion in gum (BAH/2344)	2020	\$5.00	\$2.00
GREAT BRITAIN					
948	O	New KC III International rate on Coronation Day Cover; Vfine (PRL/2346)	N/A	N/A	\$5.00
GUAM					
949	*	E1 Xfine; OG; LH; Disturbed original gum; Light gum bends (PRL/2346)	2021	\$150.00	\$70.00
HONG KONG					
950	*	#174-75 (2) F-Vfine; OG; LH (BAH/2344)	2022	\$4.00	\$2.00
951	O	#651E1 Vfine; NG; Crease on back not affecting face; Very light cancel; Face-free (BAH/2344)	2022	\$10.50	\$4.00
MANCHUKUO					
952	*	#128-29 (2) F-Vfine; OG; HR (BAH/2344)	2022	\$4.00	\$1.50
PALAU					
953	O	#41-50 On cover (5-FDC) Vfine; Silk cachet; Embossed; Very lovely; SCV for the stamps alone = \$5.50 (BAH/2344)	2022	N/A	\$5.00
RYUKYU ISLAND					
954	**	#11 Vfine; Mint; NH (BAH/2344)	2022	\$22.50	\$7.00

AND WE ARE PAU!

WIKI WIKI ONE DAY

Vintage Collectibles & Hawaiiiana Show

No Vendor Pre-Sales! 20th Fall Show, 100+ Tables, Hawaii & Mainland Dealers! All items 20 yrs old or older!

Sunday October 1, 2023 - 2 Rooms! All Vintage!
Blaisdell Hawaii Suites & Galleria

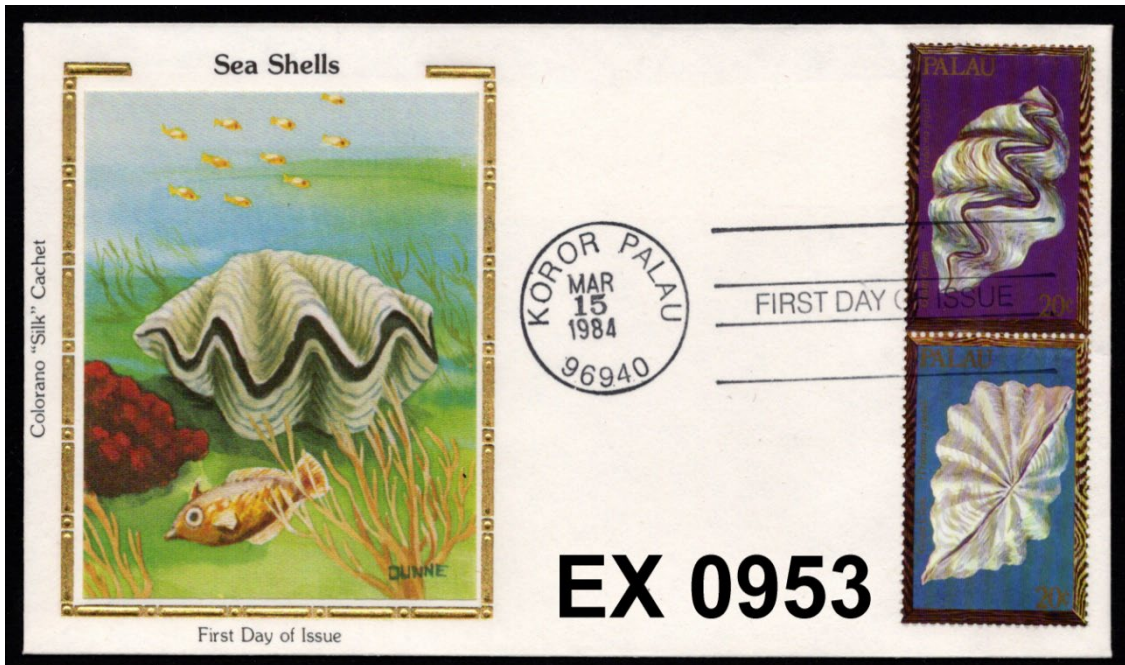
11am-4:30pm, Gen. Adm \$5
Early Entry 10am(\$20)
I&W Productions, Inc.

wikiwiki@ukulele.com
ph/text 808-561-1083

ukulele.com/wikiwiki.html
\$1 Off admission w/this Ad, 1 per entry

Visit the Holiday Wiki Show on November 19

Galleria Hawaii Suites



An individual Membership fee for the Hawaiian Philatelic Society is \$24.00 per year (Oct-Sep). Payable on October 1st of the current year. Membership includes a mailed hard copy, or e-copy if requested, of the monthly Bulletin/Auction and a mailed hard copy of the Society's Po'Oleka Journal (twice yearly). International membership is \$24.00/year for an e-copy of the monthly Bulletin/Auction and a mailed hard copy of the Po'Oleka Journal (twice yearly). International members requesting a hard copy of the monthly journal and a mailed copy of the Po'Oleka (twice yearly) are subject to a \$40.00 per year membership fee. Pro-rated, Life, Spouse and Junior membership fees are detailed on the Society's website hpshawaii.org. At this time, PayPal and checks are accepted for payment. Checks must be mailed to the Society's Post Office Box 10115, Honolulu, HI 96816-0115.

HAWAII

**STAMPS, COVERS, PROOFS, ESSAYS
BUYING & SELLING**



**Hawaii #78, Gutter Specimen Block
12 Cent Blue, 1894, World Class Rarity**

PACIFIC MIDWEST CO.

P.O. Box 730818

San Jose, CA 95173

408-532-7100

EMAIL: GARYUCB@AOL.COM

WE ARE A WORLD CLASS HAWAIIAN DEALER

ASDA APS HAWAIIAN PHILATELIC SOCIETY CHINA STAMP SOCIETY



WE SELL *Hawaii!!*

OUR WEBSITE OF HAWAII ONLY:

www.vogtstamps.com

Stamps, Covers, Postcards, Flight Covers, Documents, Coins, Currency, Paper Ephemera, Autographs, Memorabilia, Photographs, Kahului Railroad. **In short, nearly everything!**

**FROM RARITIES TO COMMON
GEMS TO NOT
(MANY NOT ON THE MARKET
FOR HALF A CENTURY!)**



Rare 66C Block



Honolulu Straight Line Cancel

VOGT STAMPS - HAWAII

650-344-3401 phone
650-401-5530 fax
vogtstamps@aol.com

Vogt Stamps Offer Members 20% Discount and Time Payments are Available

