



HAWAIIAN PHILATELIC SOCIETY



Affiliate
#136

ORGANIZED 1911

P.O. Box 10115, Honolulu, HI 96816-0115 USA WEB SITE: hpshawaii.org EMAIL: hawaiiistamps@hpshawaii.org

AUGUST 14, 2023

President: Wayne Yakuma; 1st Vice-President: Glenn Yokoyama; 2nd Vice-President & Zoom Coordinator: Kurt Streepy; Treasurer: Jerry C. Coiner;
Secretary: Vacant; Auctioneer: Ben Gale; APS Representative: Phillip C. Mendel; Po'Oleka O Hawaii Editor: Gregory Chang; Membership Chair:
Gannon Sugimura; Bulletin Meister: Richard Yanagi

Articles Needed for *Po'oleka*

Are you preparing an article on Hawaiian stamps or postal history? HPS would very much like to publish your material in *Po'oleka o Hawaii*. An existing exhibit and/or documentation of your collection may provide the basis for such an article. Published material about Hawaiian stamps that would be of historical interest to HPS members also are suitable for re-publication in *Po'oleka*. (These materials would have to be in the public domain.) If you have an article, exhibit, or historical print material, please contact Greg Chang at greggc353@gmail.com or hawaiiistamps@HPSHawaii.org.

Results of July 10, 2023 Auction – Lots not listed are passed lots.

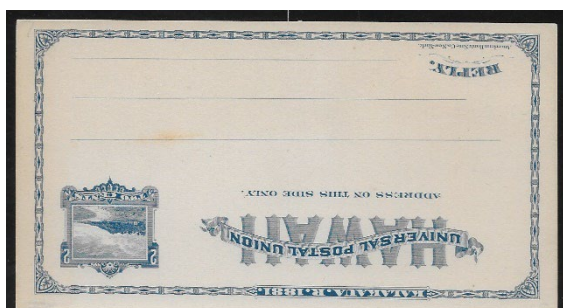
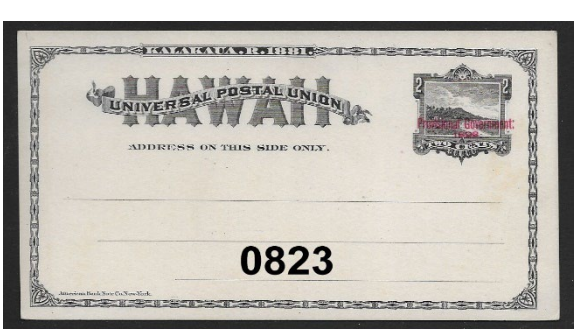
0701-\$20.00; 0702-\$12.00; 0703-\$10.00; 0704-\$60.00; 0705-\$40.00; 0706-\$27.50; 0707-\$25.00; 0708-\$22.00; 0709-\$30.00; 0710-\$21.00; 0711-\$10.00; 0712-\$11.00; 0713-\$18.00; 0714-\$27.50; 0715-\$10.00; 0716-\$140.00; 0717-\$22.00; 0718-\$33.50; 0719-\$5.00; 0720-\$4.50; 0721-\$35.00; 0722-\$27.50; 0723-\$11.00; 0724-\$40.00; 0725-\$14.00; 0726-\$22.00; 0730-\$21.00; 0731-\$425.00; 0732-\$37.50; 0733-\$185.00; 0734-\$450.00; 0735-\$500.00; 0736-\$160.00; 0737-\$12.00; 0738-\$12.00; 0739-\$8.00; 0740-\$14.00; 0741-\$20.00; 0742-\$9.00; 0743-\$14.00

CALENDAR OF FUTURE EVENTS

Aug 14, 2023	HPS Executive Board Meeting	1:00PM Zoom meeting
Aug 14, 2023	HPS August General Meeting + Auction	7:00PM St. Louis Alumni Club
Sep 11, 2023	HPS Executive Board Meeting	1:00PM Zoom meeting
Sep 11, 2023	HPS September General Meeting + Auction	7:00PM St. Louis Alumni Club
Oct 9, 2023	HPS Executive Board Meeting	1:00PM Zoom meeting
Oct 9, 2023	HPS October General Meeting + Auction	7:00PM St. Louis Alumni Club

NOTE: St. Louis Alumni Club is located at 925 Isenberg Street, Honolulu, HI. Times are Hawaiian Standard Time (HST). "Island Time"

LOT #	* / O	DESCRIPTIONS: (####) = VENDOR CODE; (*) = UNUSED; (O) = USED; (**) = UNUSED/NEVER HINGED; (OG) = ORIGINAL GUM; (DG) = DISTURBED GUM	CAT YEAR	CAT or RETAIL	UPSET
UNITED STATES OF AMERICA					
801	O	#37 Poor (Space filler; Lower right corner missing (BAH/2339)	2022	\$400.00	\$5.00
802	O	#179 F-Vfine; Short perfs lower left corner (BAH/2339)	2022	\$27.50	\$7.00
803	O	#205 + #216 Fine (BAH/2339)	2022	\$35.00	\$8.00
804	O	#211 + #215 F-Vfine (BAH/2339)	2022	\$55.00	\$15.00
805	O	#228 F-Vfine (BAH/2339)	2022	\$30.00	\$7.00
806	O	#238 F-Vfine (BAH/2339)	2022	\$72.50	\$20.00
807	**	#301 Horizontal pair; Blind perfs; F-VF; Bright color (BAH/2339)	2022	\$75.00	\$25.00
808	O	#399 Fine (BAH/2339)	2022	\$10.00	\$2.50
809	**	#623 Vfine; OG; NH; A beauty (BAH/2339)	2022	\$19.00	\$7.00
810	O	C6 Vfine; Short perfs (BAH/2339)	2022	\$30.00	\$7.00
811	*	E12 Xfine; OG; Very LH; Great centering (BRG/2338)	2022	\$45.00	\$8.50
812	O	Q8 F-Vfine (BAH/2339)	2022	\$25.00	\$7.00
813	O	#648 Average (HMK/2341)	2022	\$12.50	\$1.00
HAWAII					
814	*	#8 Pos. 3; F-Vfine; Badly thinned; UV shows possible cancel; APS cert. #198690 (FSS/2342)	2019	\$700.00	\$40.00
815	*	#9 F-Vfine; NG; Upper right corner wrinkle; Light bleach spots at bottom edge: HPS cert. #2980 (FSS/2342)	2019	\$400.00	\$70.00
816	O	#9 F-Vfine; Tears; Creases; Missing left top corner; HPS Cert. #2847 (FSS/2342)	2019	\$400.00	\$45.00
817	*	#15 F-Vfine; Plate 4-B, Type V, Position 5; NG; Hinge; Thins; Creases; HPS Cert. #2841 (FSS/2342)	2019	\$650.00	\$80.00
818	*	#16 F-Vfine; Plate 3-D, Type III, Position 1; Oxidized; Tropical stains; Thins; NG; HPS Cert. #2460 (BRG/2338)	2020	\$1,000.00	\$160.00
819	*	#16 F-Vfine; Plate 3-F, Type V, Position 5; NG; Thins; Tears interior and edge; Creases; Repaired filled thins and interior tear (FSS/2342)	2019	\$1,000.00	\$150.00
820	**	41P3 Xfine; NG as issued; NH; Very well centered; Pretty stamp (BRG/2338)	2020	\$400.00	\$150.00
821	**	#55 F-Vfine; NH (HMK/2341)	2022	\$4.00	\$1.00
822	*	#78 F-Vfine; OG; HR; Strong borders (HMK/2341)	2022	\$17.50	\$3.50
823	**	UX6 Vfine; Never hinged; Very clean (BRG/2338)	2020	\$65.00	\$22.50
824	**	UY2 Complete; Vfine; NH; Intact-previous fold (BRG/2338)	2020	\$450.00	\$185.00
HAWAIIAN TOWN POSTMARKS					
825	O	#39 hamaKUAPOKO, MAUI; POINP #281.01; R6; Purple (SAI/2340)	2023	\$3.00	\$3.00
826	O	#75 HAMA KUAPOKU, maui; POINP #281.011; R9; Black; Full date: "JUN 10, 1897"; F-Vfine (SAI/2340)	2023	\$0.60	\$2.75
827	O	#75 haMOA, maui; POINP #281.011; Purple; R7; F-Vfine (SAI/2340)	2023	\$0.60	\$2.75
828	O	#81 HANLEI, KAUAI; POINP #253.01; Purple; R5; SON; Date "1 SEP 1899"; F-Vfine (SAI/2340)	2023	\$1.00	\$5.50
829	O	#43 hanalei, P.O., kauai; POINP #255.12, Date "NOV 4, 1888 (?); Purple; R4; Vfine (SAI/2340)	2023	\$1.00	\$3.50



LOT #	*/O	DESCRIPTIONS: (####) = VENDOR CODE; (*) = UNUSED; (O) = USED; (**) = UNUSED/NEVER HINGED; (OG) = ORIGINAL GUM; (DG) = DISTURBED GUM	CAT YEAR	CAT or RETAIL	UPSET
830	O	#76 HILO, HAWAII; POINP #271.035; Black; R10; Date "SEPT 27 1897" SON; Vfine (SAI/2340)	2023	\$2.00	\$4.00
831	O	#43 HILO, hAwaII; POINP #281.01 (II); Purple; R8; Full date "NOV 16, 1891"; Vfine (SAI/2340)	2023	\$1.00	\$3.50
832	O	#59 HILO, hawaii; POINP #281.01 (II) Black; R8; Vfine (SAI/2340)	2023	\$3.00	\$3.50
833	O	#81 HONOLULU, H.I.; POINP #231.82; Black; R10; SON; Date "APR 20, 1899"; Xfine (SAI/2340)	2023	\$1.00	\$4.00
834	O	#81 On piece; HONOmU, HAWAII; POINP #253.01; Purple; R5; Fine (SAI/2340)	2023	\$1.00	\$3.25
835	O	#75 Horizontal pair on piece; HONOULIULI, OAHU; POINP #281.02; Purple; R7; Date "MAY 12, 1898"; SON; F-Vfine (SAI/2340)	2023	\$1.20	\$6.50
836	O	#43 hooKENA, hawaii; POINP #282.011; Purple; R5; Fine; Large paper adhesion (SAI/2340)	2023	\$1.00	#3.75
837	O	#81 kAHULUI, maui; POINP #272.642; Blue; R6; Full date "JAN 10, 1899"; Xfine (SAI/2340)	2023	\$1.00	\$4.25
838	O	#75 KAILUa, hawaii; POINP #281.011; Purple; R8; Fine (SAI/2340)	2023	\$0.60	\$3.75
839	O	#74 KAUNAKakai, molokai; POINP #281.01; Black; R7; Fine (SAI/2340)	2023	\$1.50	\$2.50
		AUSTRALIA			
840	*	B66-70 (5); F-Vfine; OG; LH (HMK/2341)	2022	\$29.50	\$1.50
		BRITISH CENTRAL AFRICA			
841	*	#57 Vfine; DG (HMK/2341)	2022	\$15.00	\$1.50
		BRITISH EAST AFRICA			
842	O	#90 Vfine (HMK/2341)	2022	\$26.00	\$2.00
		BURMA			
843	*	O22 Vfine; OG; LH (appears NH) (HMK/2341)	2022	\$17.00	\$1.75
		CAPE OF GOOD HOPE			
844	O	#2 Fine; Sl. Tropic stain (HMK/2341)	2022	\$170.00	\$20.00
845	O	#5 Average (HMK/2341)	2022	\$300.00	\$20.00
		GOLD COAST			
846	*	MR1 F-Vfine; OG; LH (HMK/2341)	2022	\$4.00	\$0.25
		INDIA			
847	*	#44 F-Vfine; DG/PG; LH; Light marks on back-not visible on front (HMK/2341)	2022	\$30.00	\$3.00
		NATAL			
848	O	#65 Fine; Back toned/stain (HMK/2341)	2022	\$22.50	\$2.25
849	O	#73 Vfine; Thin (HMK/2341)	2022	\$7.00	\$0.25
850	*	#80 Fine; HR; Paper adhesion (HMK/2341)	2022	\$3.50	\$0.25
		ST. HELENA			
851	O	#50 + #51 Vfine; Gum & hinge stains on back (HMK/2341)	2022	\$4.50	\$0.25
		GREAT BRITAIN			
852	O	Mint & used, uncatalogued assortment of cut squares (44) more detail on p7 lot #858 (BAH/2339)	N/A	N/A	\$3.00
		HONG KONG			
853	O	#297-98; F-Vfine (BAH/2339)	2022	\$11.75	\$3.00



0830



0831



0832



0833



0834



0835



0836



0837



0838



0840



0839



0841



0842



0843



0844



0845



0846



0847



0848



0849



0850



0851



EX 0852



0853

LOT #	* / O	DESCRIPTIONS: (####) = VENDOR CODE; (*) = UNUSED; (O) = USED; (**) = UNUSED/NEVER HINGED; (OG) = ORIGINAL GUM; (DG) = DISTURBED GUM	CAT YEAR	CAT or RETAIL	UPSET
HUNGARY					
854	**	#1842-47 + B763; Vfine; OG; NH; Fishermen + 6 fish stamp; Complete set (7) (BAH/2339)	2022	\$2.95	\$1.00
NEW ZEALAND					
855	O	#1084 Vfine; High value (BAH/2339)	2022	\$15.00	\$4.00
PHILATELIC LITERATURE					
856	**	Mint copy "The Grinnell Missionaries"; Xfine (BRG/2338)	N/A	\$20 Used	\$6.50
857	O	Used copy of "A HISTORY OF THE STAMPS OF HAWAII; 1851-1900" signed by Col. Pat Hogan, 24 Oct '82 to "Mr. Judd & Co."; Complete with color figures #1-#16; Small closed tear on top of the front cover (BRG/2338)		R \$49.95	\$7.50
858	O	A more inclusive picture of the cut squares in lot #852.			

AND WE ARE PAU!

An individual Membership fee for the Hawaiian Philatelic Society is \$24.00 per year (Oct-Sep). Payable on October 1st of the current year. Membership includes a mailed hard copy, or e-copy if requested, of the monthly Bulletin/Auction and a mailed hard copy of the Society's Po'Oleka Journal (twice yearly). International membership is \$24.00/year for an e-copy of the monthly Bulletin/Auction and a mailed hard copy of the Po'Oleka Journal (twice yearly). International members requesting a hard copy of the monthly journal and a mailed copy of the Po'Oleka (twice yearly) are subject to a \$40.00 per year membership fee. Pro-rated, Life, Spouse and Junior membership fees are detailed on the Society's website hpshawaii.org. At this time, PayPal and checks are accepted for payment. Make check payable to Hawaiian Philatelic Society. Mail to P.O. Box 10115, Honolulu, HI 96816-0115.



0854

The Grinnell Missionaries

Genuine or Forgeries?
0856



0855

A History of the Stamps of Hawaii: 1851-1900

HAWAII #1 \$125,000.00

Contains also 8 vivid full color 5 x 7 photos of all Hawaii's issues... a Rarity Scale of 40 stamps... a Comparative Value Table rating 1970 prices with 1980 prices.

0857



0858

HAWAII

**STAMPS, COVERS, PROOFS, ESSAYS
BUYING & SELLING**



**Hawaii #78, Gutter Specimen Block
12 Cent Blue, 1894, World Class Rarity**

PACIFIC MIDWEST CO.

P.O. Box 730818

San Jose, CA 95173

408-532-7100

EMAIL: GARYUCB@AOL.COM

WE ARE A WORLD CLASS HAWAIIAN DEALER

ASDA APS HAWAIIAN PHILATELIC SOCIETY CHINA STAMP SOCIETY

UNIVERSITY COINS & COLLECTIBLES

**2570 S. Beretania St.
Suite 103
Honolulu, HI 96826**

Phone: (808) 949-5781

- **BUY, SELL & CONSIGNMENTS**
- **BID BOARD**
- **TRADE NIGHTS**

**Open Monday - Saturday
11:00 AM - 5:00 PM**

WE SELL

Hawaii!!

OUR WEBSITE OF HAWAII ONLY:
www.vogtstamps.com

Stamps, Covers, Postcards, Flight Covers, Documents, Coins, Currency, Paper Ephemera, Autographs, Memorabilia, Photographs, Kahului Railroad. **In short, nearly everything!**

**FROM RARITIES TO COMMON
 GEMS TO NOT
 (MANY NOT ON THE MARKET
 FOR HALF A CENTURY!)**



Rare 66C Block



Honolulu Straight Line Cancel

VOGT STAMPS – HAWAII

650-344-3401 phone
 650-401-5530 fax
 vogtstamps@aol.com

Vogt Stamps Offer Members 20% Discount and Time Payments are Available

Like you, I am a Hawaiian Philatelic Society member. I find it difficult to find more material for my collection between 1864 & 1893.

If you have material which you would like to sell, you may be interested in showing me a picture of it. Regardless, I will respond with my thoughts.

I am interested in unusual Hawaii material such as essays & proofs (large & small), inscription blocks of 4 or 8; complete sheets of 15, 20 or larger; a range of covers (especially 2¢ brown straight edge w/o overprint, 50¢ or \$1 covers without overprints. And the list goes on, display what you have.

Thank you for your consideration to show me your Hawaii material. I sincerely appreciate it.

Jeffrey Erichson, jstampmobile@yahoo.com, POB 5142, Frisco, TX

75035-0204

