



HAWAIIAN PHILATELIC SOCIETY



Affiliate #136

P.O. Box 10115, Honolulu, HI 96816-0115 USA

Organized 1911

Twitter: @hawaiianstamps

Website: HPSHawaii.com

Email: hiphilsoc@gmail.com

April 2023

President: Wayne Yakuma; 1st Vice-President: Glenn Yokoyama; 2nd Vice-President & Zoom Coordinator: Kurt Streepy; Treasurer: Jerry C. Coiner; Secretary: Vacant; Auctioneer: Ben Gale; APS Representative: Phillip C. Mendel; Po'Oleka O Hawaii Editor: Gregory Chang; Membership Chair: Gannon Sugimura; Bulletin Meister: Richard Yanagi

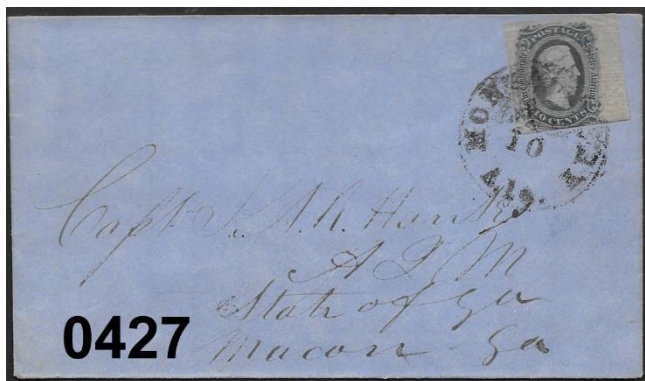
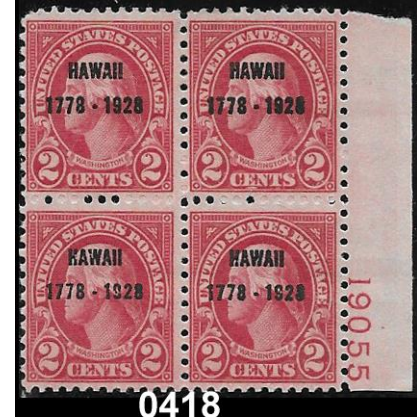
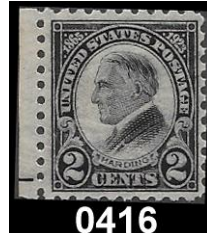
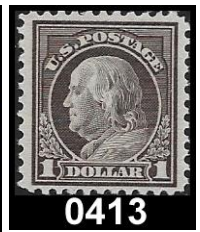
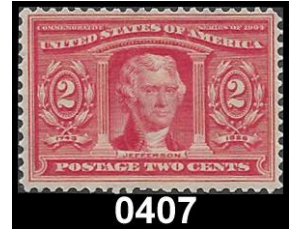
- ① **WESTPEX 2023** – April 28-30, 2023 at the San Francisco Airport Marriott Waterfront Hotel, 1800 Old Bayshore Hwy, Burlingame, CA 94010. Visit their website for more details at [westpex.com](https://www.westpex.com).
- ② **HPS ANNUAL MEET & GREET** – Is scheduled for Friday, April 28, 2023 from 4pm – 6pm in the Bayside Room 1. All Members, Guests and public are invited to attend. Mr. Norbert Wild will present on "Hawaiian Postal History: Content and New Discoveries". Free Hawaiian treats for all.
- ③ **THE ALL-HAWAIIAN AUCTION** Will be held on May 8, 2023. The Auction is full; therefore, no more lots are being accepted. Lots will be accepted for future auctions. The next All-Hawaiian Auction will be held on Monday, December 11, 2023.
- ④ **MONTHLY MEETINGS** – As a friendly reminder, the Society continues to hold its General Membership Meetings and monthly auction at the St. Louis Alumni Association Club House located at 925 Eisenberg St., Honolulu. All Members are encouraged to attend for an evening of sharing philatelic activities and socialization.
- ⑤ **OLD STAMP COLLECTIONS** – Just a note, the Society continues to receive requests for direction or help disposing of stamp collections or accumulations "inherited" by family members. This month four calls were received and responded to. So far, no Missionaries or upside-down Jenny. The point being, that the next generation is not interested in continuing what their grandparents started.
- ⑥ **UNIVERSITY COIN AND COLLECTIBLES** – Closed their doors as of March 11, 2023 and the future is unclear as to whether it is a permanent closure or waiting for a new operator. We shall see.
- ⑦ **E KOMO MAI** – Steve Baldrige, Utah Philatelic Society, attended the March General Meeting. Steve shared information regarding his Society (founded 1946) and gathered information about the operation of HPS.
- ⑧ **NEW MEMBER** – We welcome James E Matthews from Dallas, TX as our newest society member.

CALENDAR OF FUTURE EVENTS

April 10, 2023	HPS Executive Board Meeting	1:00PM Zoom meeting
April 10, 2023	HPS April Auction	7:00PM St. Louis Alumni Club
April 28-30, 2023	WESTPEX 2023	San Francisco Airport Marriott – https://www.westpex.com
April 28, 2023	Annual WESTPEX "Meet & Greet"	4pm – 6pm in the Bayside Room 1
May 8, 2023	HPS Executive Board Meeting	1:00PM Zoom meeting
May 8, 2023	HPS May Auction	7:00PM St. Louis Alumni Club

NOTE: St. Louis Alumni Club is located at 925 Isenberg Street, Honolulu, HI. Times are Hawaiian Standard Time (HST). "Island Time"

LOT #	* / O	DESCRIPTIONS: (####) = VENDOR CODE; (*) = UNUSED; (O) = USED; (**) = UNUSED/NEVER HINGED; (OG) = ORIGINAL GUM; (DG) = DISTURBED GUM	CAT YEAR	CAT or RETAIL	UPSET
United States of America					
401	O	#11A on cover Vfine; Clean cover; New York CDS; Brownish carmine shade (PRL/2320)	2021	\$26.00	\$18.00
402	O	#63 Fine; Nice color; Very light cancel (PRL/2320)	2021	\$45.00	\$30.00
403	**	#295 F-Vfine; NH; OG; Nice clean stamp (BRG/2318)	2020	\$37.50	\$9.50
404	*	#295 F-Vfine; OG Very LH (BRG/2318)	2020	\$15.00	\$6.50
405	*	#304 Vfine; OG; Previously hinged; PSE Cert. #01418295; Grade VF 80 (PRL/2320)	2021	\$60.00	\$45.00
406	*	#305 F-Vfine; OG; HR (BRG/2318)	2020	\$60.00	\$18.00
407	*	#324 F-Vfine; OG; HR; Tiny thin in perf (BRG/2318)	2020	\$22.50	\$7.50
408	**	#328 F-Vfine; OG; NH (BRG/2318)	2020	\$70.00	\$32.50
409	**	#397 Vfine; OG; NH (BRG/2318)	2020	\$35.00	\$12.50
410	**	#398 Vfine; OG; NH; Bright color (BRG/2318)	2020	\$35.00	\$15.75
411	*	#399 F-Vfine; OG; HR (BRG/2318)	2020	\$65.00	\$23.50
412	**	#497 Horizontal pair; Vfine; OG; NH; PSE Cert. #01418298; Grade VF 80; Great color (PRL/2320)	2021	\$85.00	\$55.00
413	**	#518 F-Vfine; OG; NH; PSE Cert. #01418299 (PRL/2320)	2021	\$95.00	\$70.00
414	**	#570 F-Vfine; OG; NH (BRG/2318)	2020	\$70.00	\$23.00
415	*	#571 Vfine; OG; LH; Solid margins (BRG/2318)	2020	\$35.00	\$15.00
416	**	#612 Vfine; OG; NH w/Selvage on right side (BRG/2318)	2020	\$32.50	\$12.00
417	**	#620 + #621 F-Vfine; OG; NH; Attractive pair (BRG/2318)	2020	\$25.00	\$8.50
418	**/*	#647 Plate Blk/4 F-Vfine; Top 2 stamps share a "Very" LH, Bottom 2 stamps NH; All OG; Blind perfs present (PRL/2320)	2021	\$22.50	\$14.00
419	*	#700 Vfine; OG; "Very" LH; Ample margins (BRG/2318)	2020	\$12.50	\$5.00
420	*	#833 Xfine; OG; NH; Nearly perfectly centered (PRL/2320)	2021	\$16.00	\$15.00
421	**	C46 Xfine; OG; NH; PSE Cert. #01418305; Grade XF-Sup 95 (PRL/2320)	2019 SMQ	\$40.00	\$20.00
422	**	RW62 Xfine; OG; NH; PSE Cert. #01418309; Grade XF 90 (PRL/2320)	2019 SMQ	\$70.00	\$35.00
423	*	PR81 F-Vfine; OG; HR (BRG/2318)	2020	\$95.00	\$21.50
424	**	PS11-14 Vfine; OG; NH (PRL/2320)	2021	\$22.60	\$14.00
425	O	U35 entire Vfine; West Fairfield to Stewartsville, PA (PRL/2320)	2020	\$12.00	\$10.00
CONFEDERATE STATES OF AMERICA					
426	*	#6 F-Vfine; OG; LH (PRL/2320)	2021	\$16.00	\$12.00
427	O	#11 on cover Vfine; Montgomery, AL; Cancel neat + scarce; Blue envelope (PRL/2320)	2020	\$125.00	\$100.00
428	*	#12 Xfine; OG; LH; Thin yellow gum as usual (PRL/2320)	2021	\$22.00	\$14.00
HAWAII					
429	O	#9 F-Vfine; Pos. 18; Defective; APS Cert. #197917 (FSS/2323)	2021	\$400.00	\$60.00
430	*	#11 F-Vfine; Regummed; Thins; Creases; HPS Cert. #3073 (FSS/2323)	2021	\$325.00	\$45.00



LOT #	* / O	DESCRIPTIONS: (####) = VENDOR CODE; (*) = UNUSED; (O) = USED; (**) = UNUSED/NEVER HINGED; (OG) = ORIGINAL GUM; (DG) = DISTURBED GUM	CAT YEAR	CAT or RETAIL	UPSET
431	*	#15 F-Vfine; NG; Thins; Tears (internal); Repaired; (filled thin and internal tear); Plate 4B, Type II, Pos. 2; HPS Cert. #2941 (FSS/2323)	2021	\$650.00	\$110.00
432	*	#16 F-Vfine; Plate 3G, Type IX, Pos. 9; NG; HR; Thins filled; Tears; Creases; Tropical stains; HPS Cert. #3076 (FSS/2323)	2021	\$1,000.00	\$120.00
433	*	#23 F-Vfine; Type I, Pos. 2; NG; Outer frameline cut into; HPS Cert. #3335 (FSS/2321)	2021	\$300.00	\$100.00
434	*	#24 Vfine; Plate 7A, Type III, Pos. 3; NG; HPS Cert. #2636 (FSS/2321)	2021	\$350.00	\$300.00
435	*	#25 F-Vfine; Type VI, Pos. 6; HR; Tropical stains; HPS Cert. #2718 (FSS/2321)	2021	\$350.00	\$175.00
436	*	#26 "Broken Toe Variety" F-Vfine; Plate 10A, Type II, Pos. 10; NG; HPS Cert. #2635 (FSS/2321)	2021	\$350.00	\$300.00
437	*	#27 F-Vfine; HR; Full OG; HPS Cert.#2482 (FSS/2321)	2021	\$350.00	\$175.00
438	O	#27 Avg.; Thins; Top of stamp missing; HPS Cert. #2481 (FSS/2321)	2021	\$350.00	\$70.00
439	*	#28 F-Vfine; Repaired bottom edge under "UA" of "ELUA"; Part of letters drawn in from edge repair; HPS Cert. #3069 (FSS/2323)	2021	\$325.00	\$30.00
440	O	#28a F-Vfine; Tears; Creases; HPS Cert. #3278 (FSS/2322)	2021	\$450.00	\$225.00
441	*	#29 Vfine; HR; "Hinge" thin; Four nice margins (SAI/2319)	2020	\$45.00	\$16.00
		OFFICIAL STAMPS, ENVELOPES, POSTAL CARDS & REVENUE STAMPS			
442	**	O5 Blk/4 F-Vfine; OG; NH (FSS/2322)	2021	\$440.00	\$88.00
443	*	U9 Cut square (Blue inside) F-Vfine; Hinge mark on back (FSS/2322)	2021	\$300.00	\$150.00
444	*	UY4m (entire)F-Vfine; NH; Tropical Stain (FSS/2322)	2021	\$35.00	\$15.00
445	**	R7 Fine; OG; NH; Fresh never hinged gum (SAI/2319)	2020	\$80.00	\$21.00
		HAWAII - POST MARKS + CANCELS			
446	O	31a vertical pair; 2 strikes HAmAKUAPOKO, maui; POINP #281.01; Blue; R6; Dated 188(9?) (SAI/2319)	2020	\$35.00	\$14.00
447	O	#75 hANALEI, kauai; POINP #281.01; Purple; R4; Fine (SAI/2319)	2020	\$0.60	\$6.50
448	O	#75 KAILUA, hawaii; POINP #282.011; Purple; R8; Dated "APR 12, 1900"; Fine (SAI/2319)	2020	\$0.60	\$6.00
449	O	#43 KAUNAKAKAI, molokai; POINP #282.046; Purple; R6; Fine (SAI/2319)	2020	\$1.00	\$5.50
450	O	U2 cut square; KEALAKEKUA, HAWAII; POINP #282.011; Purple; R7; Dated "MAY 22, 1893"; Vfine; Full strike (SAI/2319)	2020	\$14.00	\$1.00
451	O	U2 cut square; KEKAHA, KAUAI; POINP #281.011; Black; R9; F-Vfine; Full strike (SAI/2319)	2020	\$4.00	\$11.00
452	O	#74 horizontal pair; KOHALA, hawaii; POINP #282.013 (II); Purple; R8; Dated "MAR 24, 1898"; F-Vfine (SAI/2319)	2020	\$3.00	\$9.00
453	O	#31a KOLOA, kauai; POINP #251.02; Blue; R8; Dated; "DEC 24, 1892"; Strong strike; F-Vfine; NOTE: Plate position "Line & dot" @ bottom (SAI/2319)	2020	\$17.50	\$8.50
454	O	#75 mAKAWELI, kauai; POINP #282.013; Purple; R5 (SAI/2319)	2020	\$0.60	\$7.50
455	O	#75 naPOOPOO, hawaii; POINP #253.01; Purple; R6; Vfine (SAI/2319)	2020	\$0.60	\$5.50
456	O	#81 PAAUILO, HAWAII; POINP #253.01; Black (scarce); R6; Year date: "1899"; Fine (SAI/2319)	2020	\$1.00	\$9.00
457	O	#43 Horizontal strip/3 WAILUKU, MAUI; POINP #282.01 (i); Black; R4; Feint but readable scarce triplet; Usage only 10 months, '87-'88; Fine (SAI/2319)	2020	\$3.00	\$7.50
458	O	#42 Steamer "W.G. Hall"; POINP #AUXS'HI-I-I (HALL); purple; R2; "Just" Fine (SAI/2319)	2020	\$2.00++	\$20.00
		CANADA			
459	**	E6 Xfine; OG; NHG; Very well centered (PRL/2320)	2021	\$18.50	\$12.00



0431



0432



0433



0434



0435



0436



0437



0438



0439



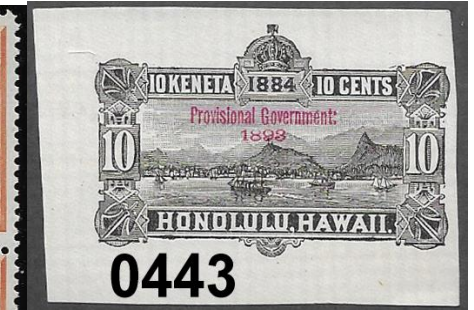
0440



0441



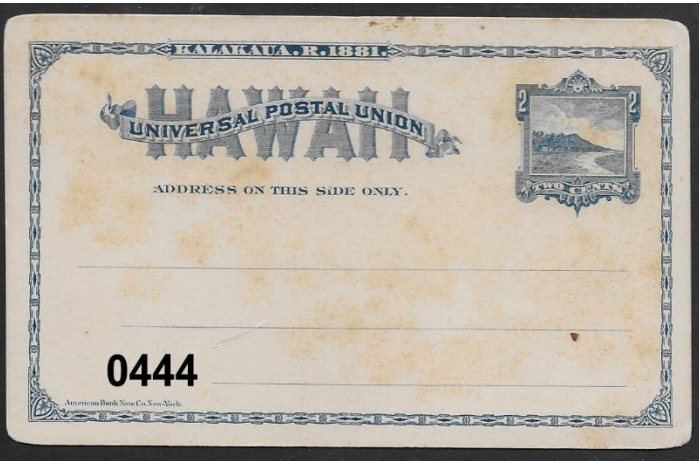
0442



0443



0446



0444



0445



0447



0448



0449



0450



0451



0452



0453



0454



0455



0456



0457



0458



0459

Vogt Stamps Offer Members 20% Discount and Time Payments are Available



WE SELL *Hawaii!!*

OUR WEBSITE OF HAWAII ONLY:
www.vogtstamps.com

Stamps, Covers, Postcards, Flight Covers, Documents, Coins, Currency, Paper Ephemera, Autographs, Memorabilia, Photographs, Kahului Railroad. **In short, nearly everything!**

**FROM RARITIES TO COMMON
GEMS TO NOT
(MANY NOT ON THE MARKET
FOR HALF A CENTURY!)**



Rare 66C Block



Honolulu Straight Line Cancel

VOGT STAMPS – HAWAII 650-344-3401 phone
650-401-5530 fax
vogtstamps@aol.com

An individual Membership fee for the Hawaiian Philatelic Society is \$24.00 per year (Oct-Sep). Payable on October 1st of the current year. Membership includes a mailed hard copy, or e-copy if requested, of the monthly Bulletin/Auction and a mailed hard copy of the Society's Po'Oleka Journal (twice yearly). International membership is \$24.00/year for an e-copy of the monthly Bulletin/Auction and a mailed hard copy of the Po'Oleka Journal (twice yearly). International members requesting a hard copy of the monthly journal **and** a mailed copy of the Po'Oleka (twice yearly) are subject to a \$40.00 per year membership fee. Pro-rated, Life, Spouse and Junior membership fees are detailed on the Society's website www.hpshawaii.com. At this time, only checks are accepted for payment and must be mailed to the Society's Post Office Box 10115, Honolulu, HI 96816-0115.

Results of March 13, 2023 Auction – Lots Not Listed are passed lots

0301-\$20.00; 0302-\$110.00; 0303-\$95.00; 0305-\$1.25; 0307-\$1.50; 0308-\$18.00; 0309-\$15.00; 0310-\$6.50; 0311-\$12.00; 0312-\$17.00; 0313-\$14.00; 0314-\$15.00; 0315-\$4.50; 0316-\$5.50; 0317-\$4.25; 0322-\$14.00; 0325-\$45.00; 0326-\$24.00; 0327-\$70.00; 0328-\$150.00; 0329-\$320.00; 0330-\$1,200.00; 0331-\$400.00; 0332-\$200.00; 0333-\$260.00; 0334-\$260.00; 0335-\$32.50; 0336-\$120.00; 0337-\$240.00; 0338-\$260.00; 0339-\$125.00; 0340-\$75.00; 0341-\$260.00; 0342-\$80.00; 0343-\$2.00

HAWAII

**STAMPS, COVERS, PROOFS, ESSAYS
BUYING & SELLING**



**Hawaii #78, Gutter Specimen Block
12 Cent Blue, 1894, World Class Rarity**

PACIFIC MIDWEST CO.

P.O. Box 730818

San Jose, CA 95173

408-532-7100

EMAIL: GARYUCB@AOL.COM

WE ARE A WORLD CLASS HAWAIIAN DEALER

ASDA APS HAWAIIAN PHILATELIC SOCIETY CHINA STAMP SOCIETY

UNIVERSITY COINS & COLLECTIBLES

**2570 S. Beretania St.
Suite 103
Honolulu, HI 96826**

Phone: (808) 949-5781

- **BUY, SELL & CONSIGNMENTS**
- **BID BOARD**
- **TRADE NIGHTS**

**Open Monday - Saturday
11:00 AM - 5:00 PM**

Like you, I am a Hawaiian Philatelic Society member. I find it difficult to find more material for my collection between 1864 & 1893.

If you have material which you would like to sell, you may be interested in showing me a picture of it. Regardless, I will respond with my thoughts.

I am interested in unusual Hawaii material such as essays & proofs (large & small), inscription blocks of 4 or 8; complete sheets of 15, 20 or larger; a range of covers (especially 2¢ brown straight edge w/o overprint, 50¢ or \$1 covers without overprints. And the list goes on, display what you have.

Thank you for your consideration to show me your Hawaii material. I sincerely appreciate it.

Jeffrey Erichson, jstampmobile@yahoo.com, POB 5142, Frisco, TX
75035-0204

