



# HAWAIIAN PHILATELIC SOCIETY



Affiliate #136

P.O. Box 10115, Honolulu, HI 96816-0115 USA

Organized 1911

Twitter: @hawaiianstamps

Website: [HPSHawaii.com](http://HPSHawaii.com)

Email: [hiphilsoc@gmail.com](mailto:hiphilsoc@gmail.com)

SEPTEMBER 2022

President: Wayne Yakuma; 1st Vice-President: Glenn Yokoyama; 2nd Vice-President: Kay Kimura; Treasurer: Jerry C. Coiner; Secretary: Phillip C. Mendel; Auctioneer: Ben Gale; APS Representative: Phillip C. Mendel; Po'Oleka O Hawaii Editor: Gregory Chang; Membership Chair: Gannon Sugimura; Bulletin Meister: Richard Yanagi; WESTPEX 2022 Exhibition Chair: Howard Kadohiro; Zoom Coordinator: Kurt Streepy

- ① **Annual Membership Fees** – Yes, it's almost that time again for payment of the Annual Membership Fee. Dues are \$24.00 per year and payable on October 1, 2022. Details are also available on the Society's web page [HPSHawaii.com](http://HPSHawaii.com) or on page 8 of this bulletin. Payable by check or face value United States stamps will be accepted—preferably 20¢ - 60¢ to reduce the number of stamps needed for a first-class mailing.
- ② **PO'OLEKA O HAWAII** – The January 2022 edition is at the printer as this bulletin goes to press. Your patience is duly noted and appreciated. Look for it to be in your mailbox very soon.
- ③ **SESCAL 2022** – SESCAL 2022 is scheduled for October 28-30, 2022. Of special note - it will be held at the Glendale Civic Auditorium, 1401 N. Verdugo Rd., Glendale, CA. The show is now just 9 miles from the Hollywood Burbank airport (the closest airport---LAX is a little further south). The Society is working on putting together a "Meet & Greet" and a guest speaker. More information as that becomes available.
- ④ **Monthly Meetings** – As a friendly reminder, the Society has resumed holding its General Membership Meetings and monthly auction at the St. Louis Alumni Association Club House located at 925 Eisenberg St., Honolulu. All Members are encouraged to attend for an evening of sharing philatelic activities and socialization.
- ⑤ **September Bulletin/Auction** – Contrary to the information provided in the August Bulletin, there will be a September auction. With the combined effort of the HPS Board, an auction has been prepared and will be included in the September Bulletin. Mahalo for all who assisted the Auctioneer in making this happen.
- ⑥ **Receiving the monthly Bulletin by internet** – This is the most reliable method of receiving your monthly Bulletin/Auction in a timely manner. If you have not indicated this preference, please considering doing so as USPS is becoming more problematic. An email or letter from you is all it takes.

## Results of the August 16, 2022 Auction—Lots not listed are passed lots.

0802-\$15.00; 0806-\$8.50; 0808-\$18.00; 0817-\$4.25; 0821-\$5.00; 0823-\$4.25; 0825-\$19.00; 0834-\$2.50; 0835-\$2.50; 0836-\$4.25; 0847-\$120.00; 0848-\$135.00; 0850-\$11.00; 0851-\$5.00; 0852-\$17.00; 0853-\$15.00; 0856-\$49.50; 0857-\$150.00; 0858-\$85.00; 0859-\$85.00; 0860-\$25.00; 0861-\$30.00; 0862-\$102.00; 0863-\$100.00; 0864-\$60.00

LOT #	* / O	DESCRIPTIONS: (####) = VENDOR CODE; (*) = UNUSED; (O) = USED; (**) = UNUSED/NEVER HINGED; (OG) = ORIGINAL GUM; (DG) = DISTURBED GUM	CAT YEAR	CAT or RETAIL	UPSET
<b>UNITED STATES of AMERICA</b>					
0901	O	#11 brownish carmine (1856) on cover Fine; Neat cover plus enclosed letter; Auburn N.Y. May 1, 1856 (PRL/2247)	2022	\$24.00	\$15.00
0902	O	#184 on advertising cover picturing Elias Howe and Bangor, ME cancel; Fine (PRL/2247)	2022	\$1.10	\$15.00
0903	O	#206 + #209 Fine; 1¢ trimmed on right; 10¢ light cancel; Fancy cork cancels (SAI/2246)	2020	\$7.00	\$1.50
0904	O	#211 Just Fine; Tiny thin; Boston, Mass, oval cancel (SAI/2246)	2020	\$27.50	\$2.75
0905	O	#215 Fine; Very light cancel (SAI/2246)	2020	\$25.00	\$3.00
0906	O	#219D (2) Fine; 2 different fancy cork cancels (SAI/2246)	2020	\$11.00	\$2.75
0907	O	#221 Fine; Boston oval cancel (SAI/2246)	2020	\$7.50	\$1.75
0908	O	#223 Vfine; Light circle cancel (SAI/2246)	2020	\$8.00	\$3.00
0909	O	#228 Fine (BAH/2244)	2019	\$30.00	\$5.00
0910	O	#236 F-Vfine; 4 ring bulls eye cancel (SAI/2246)	2020	\$10.00	\$3.25
0911	**	#247 Fine; OG; NH (BAH/2244)	2020	\$75.00	\$20.00
0912	O	#250a (2) Fine; 2 interesting cancels (SAI/246)	2020	\$12.00	\$2.75
0913	O	#273 F-Vfine; Philadelphia, PA cancel (SAI/2246)	2020	\$2.75	\$1.00
0914	O	#310 Fine; Light Chicago, Illinois precancel (SAI/2246)	2020	\$35.00	\$5.50
0915	O	#320 Just Fine; Sound, bright color (SAI/2246)	2020	\$19.00	\$2.75
0916	O	#323 Vfine; Cancel: "Worlds Fair St. Louis" (SAI/2246)	2020	\$5.00	\$2.25
0917	O	#327 Just Fine; Neat duplex "2" cancel (SAI/2246)	2020	\$27.50	\$4.75
0918	O	#341 F-fine; Fancy cork cancel (SAI/2246)	2020	\$20.00	\$5.50
0919	O	#368 Fine; Very light cancel (SAI/2246)	2020	\$19.00	\$3.00
0920	O	#1519 Strip/3 misperfed, Very Fine (BAH/2244)	N/A	R\$35.00	\$5.00
0921	**	#1686-89 Full Pane SS Xfine; Unused; OG; NH (BRG/2243)	2020	\$17.00	\$6.00
0922	O	#2520a Vfine; Booklet/10 stamps on FDC (BAH/2244)	2019	\$8.00	\$1.00
0923	O	#2559i + j on Fleetwood proof cards, Xfine; Includes written narrative regarding Pearl Harbor; Both cards are stunning in color and quality; Not the garden variety FDC (BAH/2244)	N/A	R\$15.00	\$1.00
0924	O	#4439 + #4739 both on piece; Vfine; High value priority pieces (BAH/2244)	2019	\$39.00	\$7.00
0925	O	C18 Xfine; Well centered; Light corner cancel (PRL/2247)	2021	\$47.50	\$40.00
0926	**	C24 Xfine; OG; NH w/PSE Certificate, Grade Superb 98 (BAH/2244)	2020	\$300.00	\$20.00
0927	**	C25-29 + C31 + C34-35 + C46 (9 stamps) Xfine; OG; NH (PRL/2247)	2021	\$21.90	\$10.00
0928	**	Plate Block/4 Xfine; OG; NH; Very well centered + good color (PRL/2247)	2020	\$19.00	\$10.00



0901



0902



0903



0904

0905



0906



0907



0908



0909



0910



0911



0912



0913



0914



0915



0916



0917



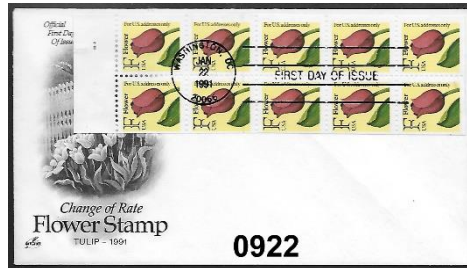
0918



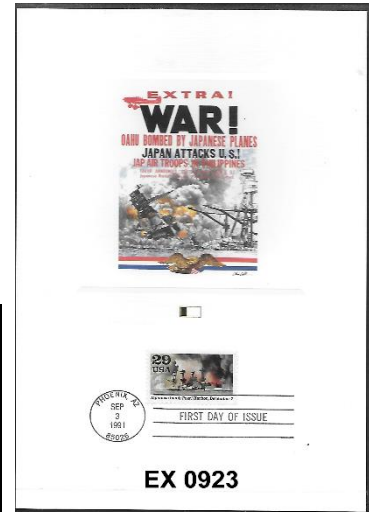
0919



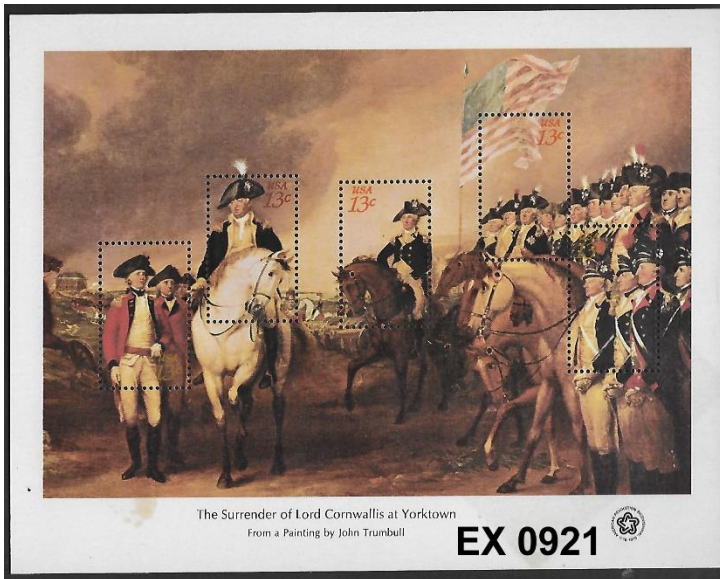
0920



0922



EX 923



The Surrender of Lord Cornwallis at Yorktown From a Painting by John Trumbull

EX 921



0924



0925



0926

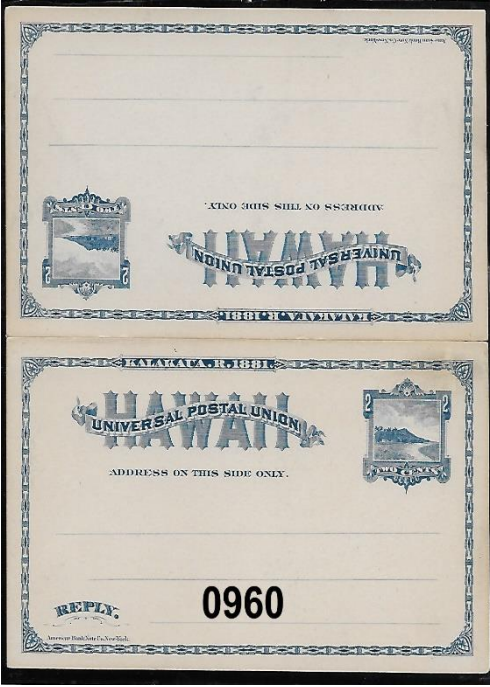
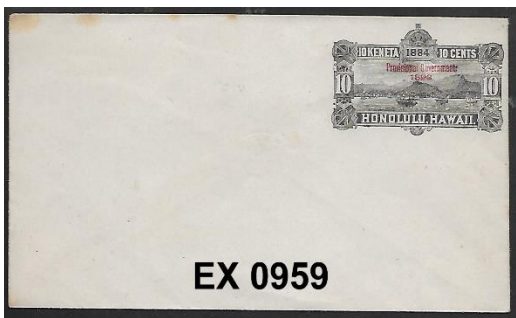
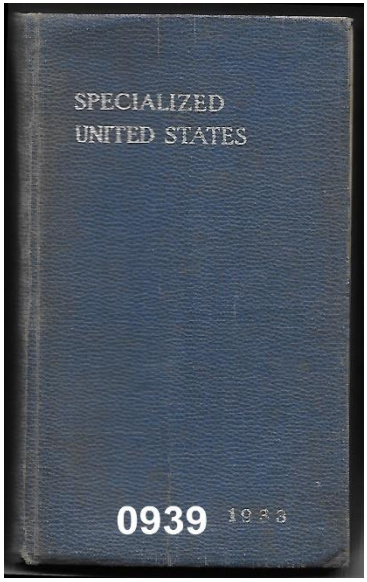
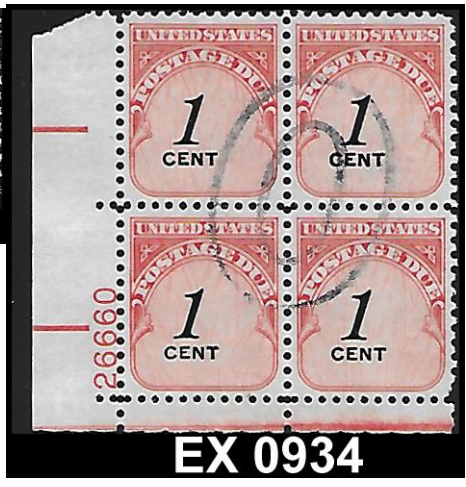


EX 927



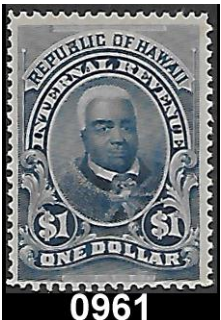
0928

LOT #	*/O	DESCRIPTIONS: (####) = VENDOR CODE; (*) = UNUSED; (O) = USED; (**) = UNUSED/NEVER HINGED; (OG) = ORIGINAL GUM; (DG) = DISTURBED GUM	CAT YEAR	CAT or RETAIL	UPSET
0929	**	F1 F-Vfine; OG; NH (PRL/2247)	2021	\$160.00	\$80.00
0930	O	J4 Vfine; Very light cancel on a well centered stamp (PRL/2247)	2021	\$70.00	\$40.00
0931	*	J22-23 F-Vfine; OG; VLH mark; Quality stamps (PRL/2247)	2021	\$62.50	\$30.00
0932	*	J55 Vfine; OG; VLH mark; Well centered (PRL/2247)	2021	\$50.00	\$30.00
0933	*	J56a F-Vfine; OG; VLH mark; Great color (PRL/2247)	2021	\$80.00	\$45.00
0934	O	J89 + J92-94 (4) used plate blocks/4 F-Vfine; NG (BAH/2244)	2019	\$3.80	\$3.00
0935	*	Q8 F-Vfine; DG; Hinge mark noted (PRL/2247)	2021	\$110.00	\$55.00
0936	*	Q11 Vfine; OG; LH mark (PRL/2247)	2021	\$80.00	\$45.00
0937	O	L02 Xfine; Post office despatch; Partial Philadelphia cancel (+\$50.00-not included in catalog value) (PRL/2247)	2020	\$80.00	\$60.00
0938	O	UX9 Advertising card entire + 1¢ Franklin added; Vfine; From <i>Publishing House of the Evangelical Association</i> , Cleveland, Ohio to Tokio (sic) Japan; Dated "May 23, 1887" (BAH/2244)	N/A	N/A	\$30.00
0939	O	Scott 1933 Specialized U.S. Catalogue; F-Vfine; Intact collector's item (BAH/2244)	ebay	\$25.00	\$5.00
<b>HAWAII</b>					
0940	*	#8 F-Vfine; HR; NG; HPS Cert. #2368 + Weiss Cert. #3 830; Ex Charles Baker (FSS/2249)	2019	\$750.00	\$240.00
0941	O	#8 F-Vfine; Thins; Repaired UL + right corner; HPS Cert. #2981 (FSS/2249)	2019	\$750.00	\$75.00
0942	*	#9 F-Vfine; NG; Thins; Tears; Creases; HPS Cert. #2661 (FSS/2249)	2019	\$400.00	\$45.00
0943	O	#9 F-Vfine; Tear right and bottom; Tropical stains; HPS Cert. #3061 (FSS/2249)	2019	\$400.00	\$60.00
0944	*	#10R F-Vfine; NG (BAH/2244)	2019	\$65.00	\$15.00
0945	*	#11SB F-Vfine; NG; Thin upper left corner (BRG/2243)	2020	\$275.00	\$45.00
0946	*	#15 F-Vfine; Plate 4-A, Type VI, Pos. 6; NG; Thins; Tears; HPS Cert. #1501; Ex Gary Peters (FSS/2249)	2019	\$650.00	\$100.00
0947	O	#16 F-Vfine; Plate 3E, Type VIII, Pos. 9; Thins; Tears; Creases; HPS Cert. #3083 (FSS/2248)	2021	\$850.00	\$110.00
0948	O	#16 Avg; Plate 3-F, Type VII, Pos. 7; Lightened pen cancel; Thins filled; Bottom frame line cut off; HPS Cert. #2959 (FSS/2248)	2021	\$850.00	\$85.00
0949	O	#21 F-Vfine; Plate 9A, Type I, Pos. 9; Thins; Tropical stains; HPS Cert. #3048 (FSS/2249)	2019	\$700.00	\$100.00
0950	*	#28 F-Vfine; NG; HR; Thins; Scuff upper left corner; Tears; Creases; HPS Cert. #2738 (FSS/2248)	2019	\$325.00	\$10.00
0951	*	#28 F-Vfine; NG; Print on back; HPS Cert. #3286 (FSS/2248)	2021	\$325.00	\$85.00
0952	*	#28a F-Vfine; NG; Creases; HPS Cert. #3303 (FSS/2248)	2021	\$350.00	\$80.00
0953	*	#28a F-Vfine; Full OG; Hinge; Pinholes; Natural creases; HPS Cert. #3279 (FSS/2248)	2021	\$350.00	\$85.00
0954	O	#32 Negative "H" cancel; Vfine (BRG/2243)	2020	\$50.00	\$18.00
0955	*	#34 F-Vfine; OG; HH (BRG/2243)	2020	\$100.00	\$25.00
0956	*	#34 Fine; NG (BRG/2243)	2020	\$100.00	\$14.00
0957	*	#52C Vfine; OG; Hinged; Nicely centered; Good looking stamp (BAH/2244)	2019	\$125.00	\$25.00
0958	*	O1-O6 Vfine/F-Vfine; OG; HR; Complete series (BRG/2243)	2020	\$300.00	\$95.00
0959	**	U1+U2+U4+U5 Entire; NH; Slight toning on some edges; Priced below cut squares in Scott (BRG/2243)	2020	\$128.50	\$35.00
0960	**	UY2 Entire; NH; Folded w/some separation; Only 1 rounded corner; Priced below severed value in Scott (BRG/2243)	2020	\$450.00	\$100.00



LOT #	* / O	DESCRIPTIONS: (####) = VENDOR CODE; (*) = UNUSED; (O) = USED; (**) = UNUSED/NEVER HINGED; (OG) = ORIGINAL GUM; (DG) = DISTURBED GUM	CAT YEAR	CAT or RETAIL	UPSET
0961	*	R11 Fine; DG; Pretty well centered; Attractive stamp (SAI/2245)	2020	\$15.00	\$3.75
		<b>CUBA</b>			
0962	*	#229 Fine (SAI/2245)	2020	\$3.50	\$1.00
0963	O	U4 cut square F-Vfine; Tear @top does not detract (SAI/2245)	2020	\$2.75	\$1.00
		<b>FRANCE</b>			
0964	O	#35 On cover Xfine; Le Havre to London 1868; Outstandingly fresh + clear cancels on face (PRL/2247)	N/A	N/A	\$60.00
0965	*	B341-46 Vfine; OG; LH (BAH/2244)	2022	\$13.60	\$4.00
		<b>MONTSERRAT</b>			
0966	**	#860 SS; Vfine; OG; NH; w/certificate of authenticity (BAH/2244)	2022	\$11.00	\$1.00
		<b>PALAU</b>			
0967	**	#198-202 Sheet/15 Vfine (3 strips of 5 + 5 labels) OG; NH (BAH/2244)	2022	\$12.75	\$1.00
		<b>PHILIPPINES</b>			
0968	*	#216 Fine; DG; HR (SAI/2245)	2020	\$9.00	\$1.75
0969	O	#218 F-Vfine; "M" in circle fancy cancel (SAI/2245)	2020	\$8.00	\$2.50
0970	O	#247-49 (3) Fine; #247 Purple OB; #248 corner missing; #249 Fancy wedges cancel (SAI/2245)	2020	\$3.70	\$1.25
0971	O	#264-66 + 268 + 292 (two) Fine; 2 w/fancy cancels plus 2 different shades on #292 (SAI/2245)	2020	\$1.75	\$1.00
0972	O	#242* + #294* + 298-9 + U30 Fine; Mixed mint/used lot with beautiful cut square "Manila OCT 23, 1924" (SAI/2245)	2020	\$1.60	\$1.00
0973	O	J2 F-Vfine; Very lightly cancelled (SAI/2245)	2020	\$2.50	\$1.00
0974	* / O	NO1**; N4 Used; N23 *; N30 *; Fine; Nice lot of Japan occupying the Philippines (SAI/2245)	2020	\$2.80	\$1.25
0975	* / O	N32-4** + N34 Used + NO3 Used; F-Vfine; Japanese Occupation lot (SAI/2245)	2020	\$2.80	\$1.25
0976	*	YP1 (two copies) F-Vfine; One perfed + one imperf (SAI/2245)	2020	\$3.00	\$1.25
0977	*	W630 Fine; Very light hinge & fault free (SAI/2245)	2020	\$75.00	\$18.00
		<b>PUERTO RICO</b>			
0978	O	RE27 + 30 f-Vfine; Second copy typical appearance for used wine stamps (SAI/2245)	2020	\$4.50	\$2.00
0979	O	No Scott number provided---good margins, up and at top; revenue "Receipt & Accounts" F-Vfine (SAI/2245)	N/A	R\$3.50	\$1.00

**AND WE ARE PAU!**



0961



0962



0963



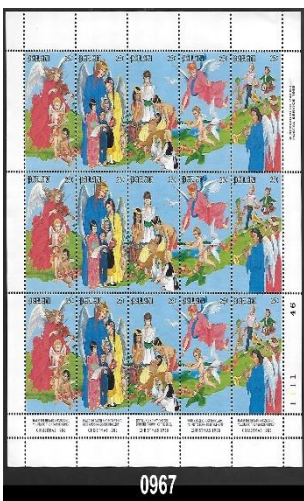
0964



EX 0965



0966



0967



0968



0969



0970



0971



0973



0972



0974



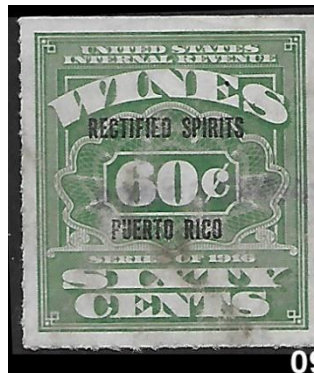
0975



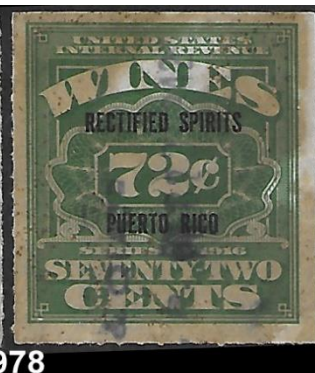
0976



0977



0978



0979

Vogt Stamps Offer Members 20% Discount and Time Payments are Available



**WE SELL**

*Hawaii!!*

**OUR WEBSITE OF HAWAII ONLY:**

**www.vogtstamps.com**

Stamps, Covers, Postcards, Flight Covers, Documents, Coins, Currency, Paper Ephemera, Autographs, Memorabilia, Photographs, Kahului Railroad. **In short, nearly everything!**

**FROM RARITIES TO COMMON  
GEMS TO NOT  
(MANY NOT ON THE MARKET  
FOR HALF A CENTURY!)**



Rare 66C Block



Honolulu Straight Line Cancel

**VOGT STAMPS - HAWAII**

650-344-3401 phone  
650-401-5530 fax  
vogtstamps@aol.com

An individual Membership fee for the Hawaiian Philatelic Society is \$24.00 per year (Oct-Sep). Payable on October 1<sup>st</sup> of the current year. Membership includes a mailed hard copy, or e-copy if requested, of the monthly Bulletin/Auction and a mailed hard copy of the Society's Po'Oleka Journal (twice yearly). International membership is \$24.00/year for an e-copy of the monthly Bulletin/Auction and a mailed hard copy of the Po'Oleka Journal (twice yearly). International members requesting a hard copy of the monthly journal **and** a mailed copy of the Po'Oleka (twice yearly) are subject to a \$40.00 per year membership fee. Pro-rated, Life, Spouse and Junior membership fees are detailed on the Society's website [www.hpshawaii.com](http://www.hpshawaii.com). At this time, only checks are accepted for payment and must be mailed to the Society's Post Office Box 10115, Honolulu, HI 96816-0115.



# HAWAII

**STAMPS, COVERS, PROOFS, ESSAYS  
BUYING & SELLING**



**Hawaii #78, Gutter Specimen Block  
12 Cent Blue, 1894, World Class Rarity**

## PACIFIC MIDWEST CO.

**P.O. Box 730818**

**San Jose, CA 95173**

**408-532-7100**

**EMAIL: GARYUCB@AOL.COM**

**WE ARE A WORLD CLASS HAWAIIAN DEALER**

**ASDA APS HAWAIIAN PHILATELIC SOCIETY CHINA STAMP SOCIETY**

HAWAII STATE NUMISMATIC ASS'N  
57<sup>TH</sup> Annual 2022

# COIN SHOW

コイン・ショー

HAWAII CONVENTION CENTER

ROOM 316

FRIDAY	NOV. 18 <sup>TH</sup>	12PM - 6PM
SATURDAY	NOV. 19 <sup>TH</sup>	10AM - 6PM
SUNDAY	NOV. 20 <sup>TH</sup>	10AM - 5PM

**DOOR PRIZES • EXHIBITS**

**COINS • STAMPS • POSTCARDS • HAWAIIANA**

**CURRENCY AND OTHER COLLECTIBLES**

**GOLD & SILVER**

**FREE ADMISSION!**

**INFORMATION  
(808) 486-4766**

**BUY & SELL**



## UNIVERSITY COINS & COLLECTIBLES

**2570 S. Beretania St.**

**Suite 103**

**Honolulu, HI 96826**

**Phone: (808) 949-5781**

- **BUY, SELL & CONSIGNMENTS**
- **BID BOARD**
- **TRADE NIGHTS**

**Open Monday - Saturday  
11:00 AM - 5:00 PM**

