



HAWAIIAN PHILATELIC SOCIETY



Affiliate #136

P.O. Box 10115, Honolulu, HI 96816-0115 USA

Organized 1911

Twitter: @hawaiianstamps

Website: HPSHawaii.com

Email: hiphilsoc@gmail.com

OCTOBER 2022

President: Wayne Yakuma; 1st Vice-President: Glenn Yokoyama; 2nd Vice-President: Vacant; Treasurer: Jerry C. Coiner; Secretary: Phillip C. Mendel; Auctioneer: Ben Gale; APS Representative: Phillip C. Mendel; Po'Oleka O Hawaii Editor: Gregory Chang; Membership Chair: Gannon Sugimura; Bulletin Meister: Richard Yanagi; WESTPEX 2022 Exhibition Chair: Howard Kadohiro; Zoom Coordinator: Kurt Streepy

① **Annual Membership Fees** – Yes, it's almost that time again for payment of the Annual Membership Fee. Dues are \$24.00 per year and payable on October 1, 2022. Details are also available on the Society's web page HPSHawaii.com or on page 9 of this bulletin. Payable by check or face-value mint (full gum, NH) United States stamps—preferably 20¢ - 60¢ to reduce the number of stamps needed for a first-class mailing.

② **E Komo Mai** – A big aloha and mahalo nui loa to the Society's Members - Kurt Lange, Everett, WA; Erik Schmidt, Hilo, HI.

③ **SESCAL 2022** – SESCAL 2022 is scheduled for October 28-30, 2022. Of special note - it will be held at the Glendale Civic Auditorium, 1401 N. Verdugo Rd., Glendale, CA. The show is now just 9 miles from the Hollywood Burbank airport (the closest airport). LAX is a little further south. The Society is working on putting together a "Meet & Greet" and a guest speaker. More information as it becomes available.

④ **Monthly Meetings** – As a friendly reminder, the Society has resumed holding its General Membership Meetings and monthly auction at the St. Louis Alumni Association Club House located at 925 Eisenberg St., Honolulu. All Members are encouraged to attend for an evening of shared philatelic activities and socialization.

⑤ **December All Hawaiian Auction + Annual Christmas Party**– RSVP to Jerry Coiner (hiphilsoc@gmail.com) and reserve your place at the table. Also note, the Auction is filling-up fast! If you have Hawaii stamps, get them in now or your next opportunity will be May 2023.

⑥ **Receiving the monthly Bulletin by internet** – This is the most reliable method of receiving your monthly Bulletin/Auction in a timely manner. If you have not indicated your preference, please consider doing so as USPS is becoming more problematic. An email or letter from you is all it takes.

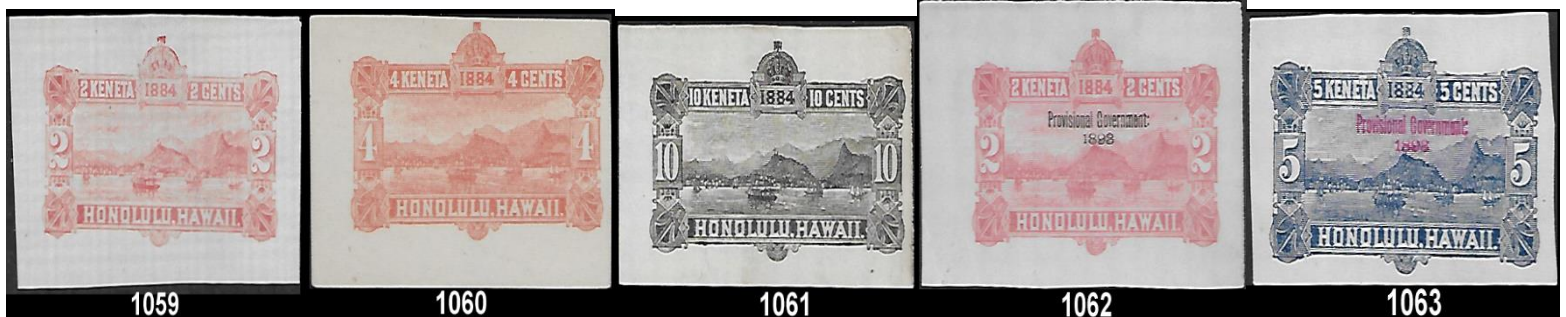
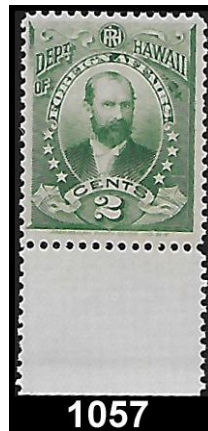
Results of the September 12, 2022 Auction—Lots not listed are passed lots.

0901-\$24.00; 0903-\$1.75; 0904-\$2.75; 0905-\$3.00; 0906-\$2.75; 0907-\$1.75; 0908-\$3.00; 0909-\$5.50; 0911-\$23.00; 0912-\$2.75; 0913-\$1.00; 0914-\$6.00; 0915-\$2.75; 0917-\$5.00; 0918-\$7.50; 0919-\$3.25; 0920-\$5.00; 0923-\$1.00; 0924-\$7.00; 0927-\$10.00; 0928-\$10.00; 0929-\$80.00; 0930-\$40.00; 0931-\$30.00; 0932-\$30.00; 0933-\$47.50; 0935-\$60.00; 0936-\$45.00; 0937-\$60.00; 0939-\$12.00; 0941-\$75.00; 0942-\$45.00; 0943-\$60.00; 0944-\$15.00; 0945-\$55.00; 0946-\$110.00; 0947-\$110.00; 0948-\$85.00; 0949-\$160.00; 0951-\$85.00; 0953-\$85.00; 0955-\$27.50; 0957-\$32.50; 0958-\$95.00; 0961-\$3.75; 0963-\$4.25; 0965-\$4.00; 0966-\$1.00; 0968-\$1.75; 0969-\$2.50; 0970-\$1.25; 0971-\$1.00; 0972-\$1.25; 0973-\$1.00; 0974-\$1.50; 0975-\$1.25; 0977-\$18.00; 0978-\$4.25

LOT #	* / O	DESCRIPTIONS: (####) = VENDOR CODE; (*) = UNUSED; (O) = USED; (**) = UNUSED/NEVER HINGED; (OG) = ORIGINAL GUM; (DG) = DISTURBED GUM	CAT YEAR	CAT or RETAIL	UPSET
United States of America					
1001	O	#112 Fine; Very light cancel; 3 large to adequate margins w/1 just touching (BRG/2251)	2020	\$130.00	\$15.00
1002	*	#213 F-Vfine; NG; HR; A very clean stamp (BRG/2251)	2020	\$35.00	\$15.00
1003	*	#219D F-Vfine; NG; HR; Bright + fault free stamp (BRG/2251)	2020	\$160.00	\$25.00
1004	*	#223 F-Vfine; NG; Very small HR (BRG/2251)	2020	\$60.00	\$5.00
1005	*	#230 Vfine; PG; Well-centered stamp (BRG/2251)	2020	\$14.00	\$5.00
1006	*	#231 Vfine; DG; LH (BRG/2251)	2020	\$12.50	\$4.25
1007	*	#233 Vfine; NG; Fault free stamp (BRG/2251)	2020	\$50.00	\$10.00
1008	*	#235 Vfine; DG w/gum creases; LH (BRG/2251)	2020	\$50.00	\$20.00
1009	**	#242 Fine; OG; NH; Closed tear lower right corner w/thin; Still looks great and a lot of stamp for the price (BRG/2251)	2020	\$3,500.00	\$100.00
1010	*	#285 Vfine; OG; LH Fault free stamp (BRG/2251)	2020	\$27.50	\$6.75
1011	**	#286 Fine; OG; NH; Very clean (BRG/2251)	2020	\$72.50	\$25.00
1012	*	#287 Fine; OG; LH; Great color (BRG/2251)	2020	\$110.00	\$13.00
1013	*	#298 F-Vfine; OG; HR (BRG/2251)	2020	\$90.00	\$30.00
1014	*	#302 Vfine; OG; Very LH; Very attractive stamp (BRG/2251)	2020	\$55.00	\$22.00
1015	*	#306 F-Vfine; OG; LH; Martha never looked better (BRG/2251)	2020	\$45.00	\$18.00
1016	O	U10 3¢ Cut square; Vfine; 1857 cds (SAI/2253)	2020	\$4.00	\$1.75
1017	O	U19 1¢ Cut square; F-Vfine; Neat red cds "PAID" (SAI/2253)	2020	\$15.00	\$4.75
1018	O	U34 3¢ Cut square; F-Vfine; "PAID" cancel (SAI/2253)	2020	\$6.00	\$3.50
1019	O	U50 2¢ Cut square; F-Vfine; Light cds (SAI/2253)	2020	\$9.50	\$4.25
1020	O	U166 3¢ Cut square; Vfine; #6 duplex cancel (SAI/2253)	2020	\$6.25	\$2.75
1021	O	U114 1¢ Cut square; Vfine; Neat oval (Ohio) town cancel (SAI/2253)	2020	\$4.00	\$1.75
1022	*	WS1*, PS12*, #56* F-Vfine; 3 different 25¢ Value Savings Stamps (SAI/2253)	2020	\$20.00	\$3.25
1023	*	WS12-13 Pairs; 10¢ Pair, Fine, HR; 25¢ Pair, F-Vfine, DG (SAI/2253)	2020	\$16.50	\$2.50
HAWAII					
1024	*	#6 F-Vfine; HR; Creases; Cut left top corner; HPS Cert. #3060 (FSS/2255)	2021	\$875.00	\$150.00
1025	*	#9 F-Vfine; Regummed; Thins; Tropical stains; Repaired bottom edge; Oil infused paper; HPS Cert. #3074 (FSS/2255)	2021	\$400.00	\$55.00
1026	O	#9 F-Vfine; HR; Thins; Tears; Creases; Tropical stains; Bleach shot discolorations; HPS Cert. #2950 (FSS/2256)	2021	\$80.00	\$60.00
1027	*	#10a F-Vfine; NG; Good margins; Bright stamp (RJC/2250)	2020	\$400.00	\$32.00
1028	*	#27 F-Vfine; OG; HR (FSS/2255)	2021	\$350.00	\$115.00
1029	*	#28 F-Vfine; NG; Thins; Creases; Nick at bottom edge; HPS Cert. #2960 (FSS/2256)	2021	\$325.00	\$55.00
1030	*	#28 F-Vfine; Regummed; Thins; Repaired filled thin; HPS Cert. #3015 (FSS/2256)	2021	\$325.00	\$20.00
1031	O	#27 F-Vfine; Thins; Creases; Repaired filled thins; HPS Cert. #2952 (FSS/2256)	2021	\$350.00	\$60.00
1032	*	#28 F-Vfine; Regummed; HR; HPS Cert. #3013 (FSS/2256)	2021	\$325.00	\$60.00

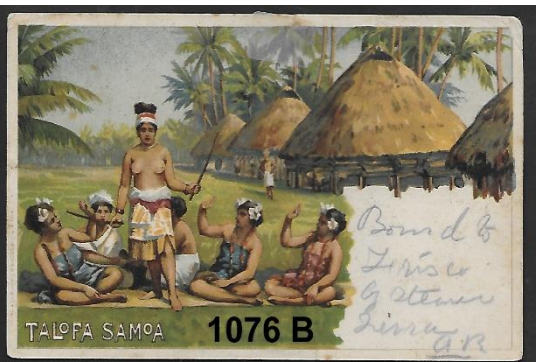
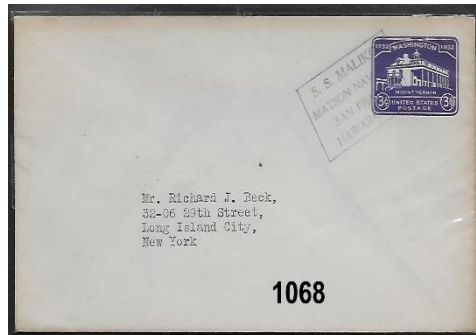
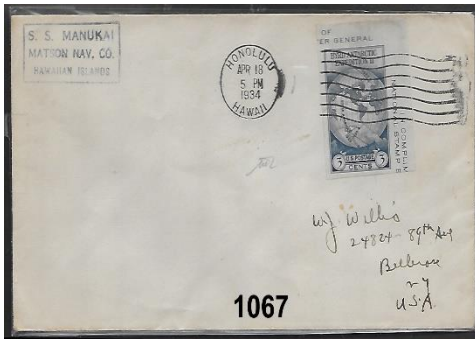
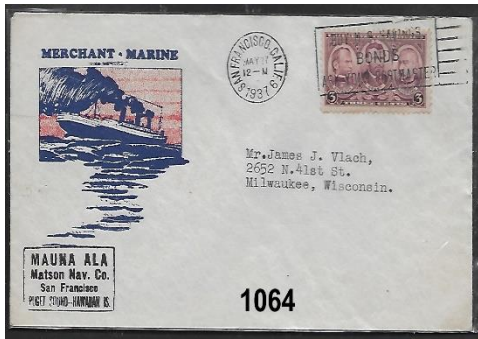


LOT #	* / O	DESCRIPTIONS: (####) = VENDOR CODE; (*) = UNUSED; (O) = USED; (**) = UNUSED/NEVER HINGED; (OG) = ORIGINAL GUM; (DG) = DISTURBED GUM	CAT YEAR	CAT or RETAIL	UPSET
1033	O	#28 Fine; Left margin cut into; HPS Cert. #2932 (FSS/2256)	2021	\$325.00	\$50.00
1034	**	#30 F-Vfine; OG; NH (RJC/2250)	2020	\$25.00	\$10.00
1035	O	#33 Poor; Counterfeit stamp and cancel (RJC/2250)	N/A	N/A	\$15.00
1036	O	#34 F-Vfine; Used during last week of independent Hawaii (RJC/2250)	2020	\$45.00	\$15.00
1037	O	#37 Vfine (RJC/2250)	2020	\$6.00	\$3.50
1038	O	#43 Horizontal pair; F-Vfine; Missing perfs (RJC/2250)	2020	\$2.00	\$2.00
1039	O	#47 Vfine (RJC/2250)	2020	\$65.00	\$28.00
1040	**	#53 + #56 + 58; F-Vfine; Horizontal pairs; OG; NH; Priced as singles (RJC/2250)	2020	\$159.00	\$60.00
1041	**	#60 Vfine; OG; NH (RJC/2250)	2020	\$40.00	\$25.00
1042	*	#63 Vfine; DG; LH (RJC/2250)	2020	\$175.00	\$90.00
1043	*	#71 F-Vfine; OG; LH (RJC/2250)	2020	\$40.00	\$18.00
1044	** / *	#74-#77 Fine-Vfine; All OG + NH; Except #75=Very LH (RJC/2250)	2020	\$33.60	\$16.00
1045	**	#78 Vfine; OG; NH; Very light toning on left margin (RJC/2250)	2020	\$37.50	\$16.00
1046	**	#79 F-Vfine; OG; NH; Solid margins (RJC/2250)	2020	\$47.50	\$20.00
1047	*	#81 F-Vfine; Full original gum-disturbed; HR; Tropical stains; Gum residue on face; Almost complete inscription in bottom selvage; HPS Cert. #3062 (FSS/2255)	2021	\$350.00	\$120.00
		HAWAII TOWN POSTMARKS			
1048	O	#81 eLEELe, KAUI; POINP #253.01; Purple; R4; Dated: "MAY 11, 1900"; Vfine (SAI/2252)	2021	\$1.00	\$8.00
1049	O	#75 hANALEI, kauai; POINP #282.011; Purple; R6; F-VFine (SAI/2252)	2021	\$0.60	\$7.00
1050	O	#75 HONomu, HAWAII; POINP #253.01; Purple; R5; F-Vfine (SAI/2252)	2021	\$0.60	\$3.50
1051	O	#75 KAILUA, hawaii; POINP #281.011; Purple; R6; Fine (SAI/2252)	2021	\$0.60	\$4.25
1052	O	#81 kaunAKAKAI, molokai; POINP #255.01; Purple; R4; Vfine (SAI/2252)	2021	\$1.00	\$5.50
1053	O	#75 on piece KEALAKEKUA, hawaii; POINP #281.02; Purple; R7; F-Vfine; Several double transfers in "CENT" (SAI/2252)	2021	\$0.60	\$6.00
1054	O	#43 KOLOA, hawaii; POINP #282.012; Black; R8; Vfine (SAI/2252)	2021	\$1.50	\$3.50
1055	O	#43 LIHUE, KAUI; POINP #253.41; Blue; R5; Dated "1889"; Vfine (SAI/2252)	2021	\$1.50	\$4.25
1056	O	#42 WAIMEA, Kauai; POINP #282.011; Purple; R9; Fine (SAI/2252)	2021	\$2.00	\$3.75
		HAWAII OFFICIALS + ENVELOPES			
1057	**	O1 F-Vfine; OG; NH w/selvage at bottom (FSS/2255)	2019	\$110.00	\$25.00
1058	**	U1 Cut square F-Vfine; NH (SAI/2252)	2021	\$2.75	\$1.25
1059	**	U2 Cut square Vfine; NH (SAI/2252)	2021	\$2.75	\$1.25
1060	**	U3 Cut square F-Vfine; NH (SAI/2252)	2021	\$15.00	\$5.50
1061	**	U5 Cut square; Fine; NH (SAI/2252)	2021	\$25.00	\$8.50
1062	**	U11 Cut square; Vfine; NH (SAI/2252)	2021	\$3.00	\$1.75
1063	**	U12 Cut square; F-Vfine; NH (SAI/2252)	2021	\$4.50	\$2.25



LOT #	* / O	DESCRIPTIONS: (####) = VENDOR CODE; (*) = UNUSED; (O) = USED; (**) = UNUSED/NEVER HINGED; (OG) = ORIGINAL GUM; (DG) = DISTURBED GUM	CAT YEAR	CAT or RETAIL	UPSET
HAWAII MEMORABILIA					
1064	O	1937 S.S. Mauna Ala, Matson Nav. Co. handstamp on entire cover; Dated "MAY 27, 1937"; Vfine (RT/2254)	N/A	N/A	\$17.00
1065	O	1934 S.S. Maunalei, Matson Nav. Co. handstamp on cover; Dated "NOV 8, 1934"; Vfine (RT/2254)	N/A	N/A	\$17.00
1066	O	1934 S.S. Mauna Wili, Matson Nav. Co. handstamp on cover; Dated "OCT 13, 1934"; Vfine (RT/2254)	N/A	N/A	\$17.00
1067	O	1934 S.S. Manukai, Matson Nav. Co. handstamped on cover from Honolulu to NY; Dated "APR 18, 1934"; Vfine (RT/2254)	N/A	N/A	\$17.00
1068	O	S.S. Maliko, Matson Nav. Co handstamp on cover; F-Vfine (RT/2254)	N/A	N/A	\$17.00
1069	O	1938 Steamer Manukai, Matson Nav. Co. handstamp; Fine: Includes uncanceled 3 halfpence postage revenue stamp on face; Dated " MAR 24, 1938" (RT/2254)	N/A	N/A	\$17.00
1070	O	1938 Honolulu incoming Clipper mail w/4 postage dues (20¢ total) on scarce shortpaid cover with Honolulu cancels; Vertical fold; Fine (RT/2254)	N/A	N/A	\$15.00
1071	**	1951 100th Anniversary of Hawaii Stamps; 4 (different colors) complete sheets as issued, "Cinderellas" portraying Missionary replicas; Vfine; OG; NH (RJC/2250)	N/A	N/A	\$10.00
FRANCE					
1072	O	1916 Honolulu incoming cover from France with scarce double-oval Paquebot marking; Fine; Dated "AUG 21, 1916" (RT/2254)	N/A	N/A	\$17.00
MECKLENBURG-SCHWERIN					
1073	O	Blk/4 used 1856 stamps; Vfine and very unusual (SAI/2253)	2020	\$125.00	\$25.00
NEW SOUTH WALES					
1074	O	#46 Just Fine (SAI/2253)	2020	\$29.00	\$3.00
1075	O	#90 Fine + sound appearing; Natural SE @top; Wmk "52"; Perf 10 (SAI/2253)	2020	\$100.00	\$8.00
NEW ZEALAND					
1076	O	1904 "RMS Sierra" circular cogwheel cancel on Samoa PPC (PG18) (RT/2254)	N/A	N/A	\$15.00
SOMALIA					
1077	O	#10 + #11 Fine; 1906 "Elephants" Overprinted (SAI/2253)	2020	\$31.50	\$8.50
SWEDEN					
1078	O	J14 Vfine; SON cancel "Monstera"; Dtd "20,3, 1891" (SAI/2253)	2020	\$6.00++	\$3.25
SYRIA-UAR					
1079	**	C9 Vfine; Scarce airmail sheet; NH (SAI/2253)	2020	\$50.00	\$10.00
VIETNAM					
1080	**	J15-20 Vfine; OG; NH; Complete postage due set (SAI/2253)	2020	\$52.00	\$10.00

AND WE ARE PAU!



HAWAII STATE NUMISMATIC ASS'N
57TH Annual 2022

COIN SHOW

コイン・ショー

HAWAII CONVENTION CENTER

ROOM 316

FRIDAY	NOV. 18 TH	12PM - 6PM
SATURDAY	NOV. 19 TH	10AM - 6PM
SUNDAY	NOV. 20 TH	10AM - 5PM

DOOR PRIZES • EXHIBITS

COINS • STAMPS • POSTCARDS • HAWAIIANA

CURRENCY AND OTHER COLLECTIBLES

GOLD & SILVER

FREE ADMISSION!

INFORMATION
(808) 486-4766

BUY & SELL



UNIVERSITY COINS & COLLECTIBLES

2570 S. Beretania St.
Suite 103
Honolulu, HI 96826

Phone: (808) 949-5781

- BUY, SELL & CONSIGNMENTS
- BID BOARD
- TRADE NIGHTS

Open Monday - Saturday
11:00 AM - 5:00 PM

HAWAII

**STAMPS, COVERS, PROOFS, ESSAYS
BUYING & SELLING**



Hawaii #78, Gutter Specimen Block
12 Cent Blue, 1894, World Class Rarity

PACIFIC MIDWEST CO.

P.O. Box 730818

San Jose, CA 95173

408-532-7100

EMAIL: GARYUCB@AOL.COM

WE ARE A WORLD CLASS HAWAIIAN DEALER

ASDA APS HAWAIIAN PHILATELIC SOCIETY CHINA STAMP SOCIETY

An individual Membership fee for the Hawaiian Philatelic Society is \$24.00 per year (Oct-Sep). Payable on October 1st of the current year. Membership includes a mailed hard copy, or e-copy if requested, of the monthly Bulletin/Auction and a mailed hard copy of the Society's Po'Oleka Journal (twice yearly). International membership is \$24.00/year for an e-copy of the monthly Bulletin/Auction and a mailed hard copy of the Po'Oleka Journal (twice yearly). International members requesting a hard copy of the monthly journal **and** a mailed copy of the Po'Oleka (twice yearly) are subject to a \$40.00 per year membership fee. Pro-rated, Life, Spouse and Junior membership fees are detailed on the Society's website www.hpshawaii.com. At this time, only checks are accepted for payment and must be mailed to the Society's Post Office Box 10115, Honolulu, HI 96816-0115.

Vogt Stamps Offer Members 20% Discount and Time Payments are Available



WE SELL *Hawaii!!*

OUR WEBSITE OF HAWAII ONLY:
www.vogtstamps.com

Stamps, Covers, Postcards, Flight Covers, Documents, Coins, Currency, Paper Ephemera, Autographs, Memorabilia, Photographs, Kahului Railroad. **In short, nearly everything!**

**FROM RARITIES TO COMMON
 GEMS TO NOT
 (MANY NOT ON THE MARKET
 FOR HALF A CENTURY!)**



Rare 66C Block



Honolulu Straight Line Cancel

VOGT STAMPS - HAWAII

650-344-3401 phone
 650-401-5530 fax
vogtstamps@aol.com

