



HAWAIIAN PHILATELIC SOCIETY



Affiliate #136

P.O. Box 10115, Honolulu, HI 96816-0115 USA

Organized 1911

Twitter: @hawaiianstamps

Website: HPSHawaii.com

Email: hiphilsoc@gmail.com

President: Wayne Yakuma; 1st Vice-President: Glenn Yokoyama; 2nd Vice-President: Kay Kimura; Treasurer: Jerry C. Coiner; Secretary: Phillip C. Mendel; Auctioneer: Ben Gale; APS Representative: Phillip C. Mendel; Po'Oleka O Hawaii Editor: Gregory Chang; Membership Chair: Gannon Sugimura; Bulletin Meister: Richard Yanagi; WESTPEX 2022 Exhibition Chair: Howard Kadohiro; Zoom Coordinator: Kurt Streepy

APRIL 2022

- ① **E KOMO MAI** to Lou Padillo, Honolulu, HI; Jan Elnar Tamber, Norway; Cosette Harms, Honolulu, HI; and Mike Hirschhorn, Australia.
- ② **THE HAWAII TOWNMARK IDENTIFIER** by Kay Hoke is out of print, yet demand remains high. On March 9, the HPS Board approved having the booklet scanned, posted, and available for free downloading on the HPS website. Jerry Coiner will be posting it soon. Look for confirmation in a future Bulletin.
- ③ **WESTERN PHILATELIC LIBRARY** – Has a limited supply of Hawaiian Publications for sale. Most are single offerings and will be available on a first-come/first-served basis. Contact Richard Clever at richard@asiaphilatelics.com for details on what is available and prices.
- ④ **WESTPEX 2022-“MEET & GREET”** Is scheduled for Friday, April 22, 4-6PM in the Bayside 1 Room. Harold Tuchfeld will present *“The Intimate Trans-Pacific Embrace: San Francisco & Hawaii 1876-1916”*.
- ⑤ **WESTPEX 2022- “GUEST SOCIETY”** –To date, there are 6 HPS-sponsored exhibits, and room for more. Contact Howard Kadohiro (chuutohampa@yahoo.com) for exhibit details. HPS will be awarding a Society trophy to a winning HPS Exhibitor with presentation at the Westpex Awards Banquet. HPS will have a table at the show. Stop by and say “Hi” and “Talk Story”. Howard is still looking for volunteers to staff the table; contact Howard directly. Society Members are encouraged to wear Aloha Shirts at Westpex to show support for the Society. Howard is arranging for a “Hospitality Room” at the Marriott— details to follow.
- ⑥ **WESTPEX 2022** – Schuyler Rumsey Auctions reminds everyone the Gary Munson Collection will be featured in the auction.

CALENDAR OF FUTURE EVENTS

March 20, 2022	Wiki Wiki Show	10:30AM-4:30PM Blaisdell Center
April 11, 2022	HPS Executive Board Meeting	1:00PM Zoom meeting
April 11, 2022	HPS April Auction	7:00PM St. Louis Alumni Club
April 22-24, 2022	WESTPEX 2022	SF Airport Marriott Hotel westpex.com for more info
May 9, 2022	HPS Executive Board Meeting	1:00PM Zoom meeting
May 9, 2022	HPS May Auction	7:00PM St. Louis Alumni Club

NOTE: St. Louis Alumni Club is located at 925 Isenberg Street, Honolulu, HI. Times are Hawaiian Standard Time (HST)

LOT #	* / O	DESCRIPTIONS: (####) = VENDOR CODE; (*) = UNUSED; (O) = USED; (**) = UNUSED/NEVER HINGED; (OG) = ORIGINAL GUM; (DG) = DISTURBED GUM	CAT YEAR	CAT or RETAIL	UPSET
UNITED STATES of AMERICA					
0401	*	#314 Xfine; HR; Beautiful; Well centered (SAI/2221)	2020	\$14.00	\$4.50
0402	**	#319F Vfine; NH; Type II; Fresh; Well centered (SAI/2221)	2020	\$25.00	\$11.00
0403	**	#340 Fine; NH (SAI/2221)	2020	\$150.00	\$22.00
0404	*	#349 Fine; HR; Perf 12; Coil; Plate crack or reentry between "U + S" and above "O" (SAI/2221)	2020	\$80.00	\$23.00
0405	*	#379 Fine; LH; SL watermark (SAI/2221)	2020	\$37.50	\$9.00
0406	*	#382 F-Vfine; OG; LH (BAH/2220)	2020	\$225.00	\$45.00
0407	**	#411 F-Fine; NH; Very fresh coil pair (SAI/2221)	2020	\$45.00	\$12.00
0408	*	#492 Vfine; Very lightly hinged; Centered (SAI/2221)	2020	\$9.00	\$2.50
0409	*	#495 Fine; HR; Clean coil pair (SAI/2221)	2020	\$24.00	\$6.00
0410	**	#497 Fine; NH; Excellent color (SAI/2221)	2020	\$85.00	\$18.00
0411	*	F-Vfine; HR; Perf 11; Pretty nice margins (SAI/2221)	2020	\$12.00	\$3.75
0412	*	#528B Vfine; PG; Centered; Most of original gum (SAI/2221)	2020	\$22.50	\$4.50
0413	*	#536 Fine; HR; Perf 12½ (SAI/2221)	2020	\$20.00	\$4.25
0414	**	#537 Xfine; NH; Super fresh; Very well centered (SAI/2221)	2020	\$20.00	\$8.00
0415	*	#556 Xfine; HR; Perf 11; Primo (not the beer) (SAI/2221)	2020	\$16.00	\$6.50
0416	**	#723 Vfine; NH; Joint line pair (BAH/2220)	2020	\$82.50	\$20.00
0417	O	#778 SS Vfine; FDC w/TIPEX cancel (MAY 9, 1936) (BAH/2220)	2020	\$14.00	\$5.00
0418	**	#906 Plate block F-Vfine; NH (BAH/2220)	2019	\$22.50	\$7.00
0419	O	#2124 F-Vfine; Line Pair w/plate #3 (BAH/2220)	2019	N/A	\$2.00
0420	O	#2609 Vfine; Strip of 5 w/plate #9 (BAH/2220)	2019	N/A	\$4.50
0421	O	#2863-66 + #2866a; 5 Fleetwood proof cards on heavy stock (Not the typical FDC); Very high quality & attractive; measure 9"X6" (BAH/2220)	2010	\$7.75	\$2.50
0422	**	22 kt gold replica of the 24¢ inverted Jenny; <i>Postal Commemorative Society</i> issue w/2 cards describing the history of the stamp; Very clean copy (BAH/2220)	N/A	R\$25.00	\$1.00
0423	**	#5430 Xfine; NH; Face value = \$26.35 (BAH/2220)	2020	\$53.00	\$20.00
0424	O	C90 F-Vfine on entire cover to Korea; Dated APR 6, 1978; "Return To Sender" stamped (BAH/2220)	N/A	N/A	\$5.00
0425	O	CVP 31 (Vertical strip/3) + CVP33 (Horizontal strip/3) Vfine (BAH/2220)	2020	N/A	\$3.00
0426	O	R250 Vfine; Well centered (SAI/2221)	2020	\$20.00	\$8.50



0401



0402



0403



0404



0405



0406



0407



0408



0409



0410



0411



0412



0413



0414



0415



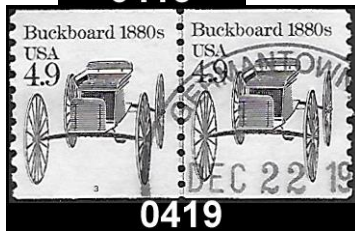
0416



0417



0418



0419



0420



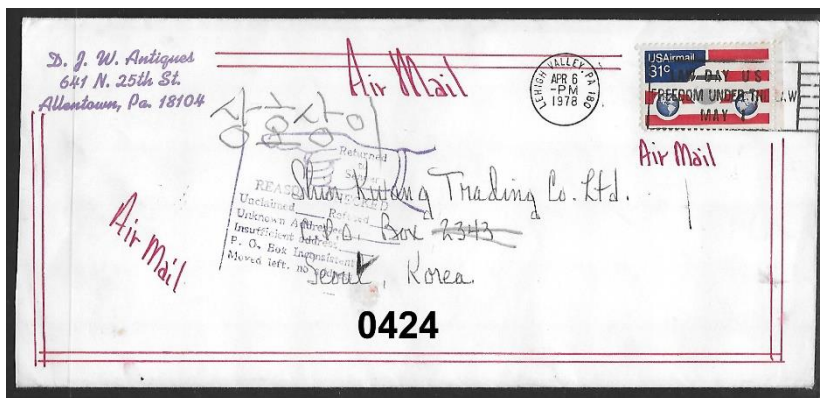
EX 0421



0422



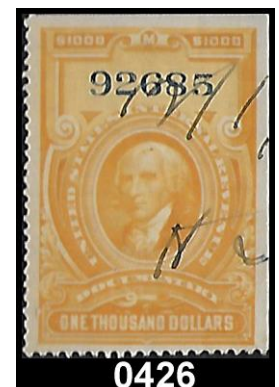
0423



0424

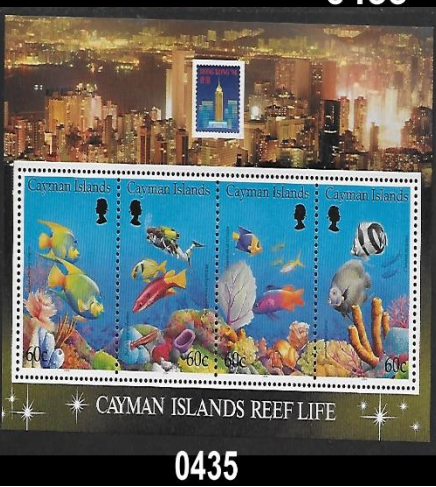


EX 0425



0426

LOT #	* / O	DESCRIPTIONS: (####) = VENDOR CODE; (*) = UNUSED; (O) = USED; (**) = UNUSED/NEVER HINGED; (OG) = ORIGINAL GUM; (DG) = DISTURBED GUM	CAT YEAR	CAT or RETAIL	UPSET
HAWAII					
0427	O	60 U.S. stamps used in Hawaii Territory pre-1959; Assorted postal markings (RJC/2219)	N/A	N/A	\$5.00
AUSTRALIA					
0428	O	#400-17 Vfine; Complete set minus 1¢ + 4¢ values (RJC/2219)	2019	\$17.95	\$6.50
AUSTRIA					
0429	O	C60 Vfine; Blue smudges on back (not visible on front) (HMK/2222)	2022	\$8.50	\$1.00
AUSTRALIAN ANTARCTIC TERRITORY					
0430	O	L1-6 Vfine (RJC/2219)	2022	\$7.90	\$3.75
BAHRAIN					
0431	O	#6 Vfine; Missing perfs LR corner; Pencil marks on back (HMK/2222)	2022	\$25.00	\$2.00
0432	O	#9 Vfine; Pencil marks on back (HMK/2222)	2022	\$87.50	\$7.50
BRITISH SOLOMON ISLANDS					
0433	O	#149//66 Vfine; 15 values to \$2 as 1st issued; 3 values added later (RJC/2219)	2019	\$12.05	\$3.00
CAYMAN ISLANDS					
0434	**	#693-98 SS/6; Vfine; NH; OG (RJC/2219)	2019	\$16.30	\$7.50
0435	**	#676 SS/4; Xfine; NH (RJC/2219)	2019	\$13.50	\$4.75
CANADA					
0436	O	#157 F-Vfine; HR (HMK/2222)	2022	\$11.00	\$1.00
0437	O	#302 Xfine; Nice copy of high value stamp (RJC/2219)	2019	\$10.00	\$4.00
0438	*	C3 Vfine; OG; HR (HMK/2222)	2022	\$4.00	\$1.00
CEYLON					
0439	O	#289 Fine; Short perfs (HMK/2222)	2022	\$19.00	\$1.00
0440	*	MR1-4 (4) F-Vfine; OG; HR; Sl. Tropic stain (HMK/2222)	2022	\$8.75	\$1.00
CHILE					
0441	*	#15-18 Average; NG; Short perfs (BAH/2220)	2022	\$290.00	\$10.00
FRANCE					
0442	O	C5-6 Vfine; Mark on back (HMK/2222)	2022	\$6.25	\$1.00
0443	O	C16 Vfine (HMK/2222)	2022	\$5.25	\$1.00
ICELAND					
0444	O	#147 F-Vfine (HMK/2222)	2022	\$9.50	\$1.00



LOT #	* / O	DESCRIPTIONS: (####) = VENDOR CODE; (*) = UNUSED; (O) = USED; (**) = UNUSED/NEVER HINGED; (OG) = ORIGINAL GUM; (DG) = DISTURBED GUM	CAT YEAR	CAT or RETAIL	UPSET
0445	* / O	B69-74 (6) Vfine; #70 torn; HR; OG (HMK/2222)	2022	\$9.90	\$1.00
IRELAND					
0446	O	#147-48 (2) F-Vfine; HR; Mark on back (HMK/2222)	2022	\$26.25	\$3.00
0447	O	#153-54 (2) Fine; HR (HMK/2222)	2022	\$8.50	\$1.00
JAPAN					
0448	O	#371 + #426 + #434 on cover; Vfine; Missionary letter included; Dark tape on back; Tokyo to Santa Ana, CA; Scott stamp value = \$1.80 (BAH/2220)	2022	N/A	\$2.00
KOREA					
0449	O	C26 Vfine; HR; Mark on back (HMK/2222)	2022	\$10.00	\$1.00
MALAYA					
0450	O	#93 Vfine; Perfs are intact in LR; Cancel obscured (RJC/2219)	2022	\$47.50	\$2.50
NEW CALEDONIA					
0451	**	C68 Xfine; OG; NH; "Napoleon" (RJC/2219)	2019	\$16.50	\$5.00
NEW ZEALAND					
0452	O	#298B-301 Vfine (RJC/2219)	2019	\$32.00	\$8.75
NORFOLK ISLAND					
0453	O	#13-18 Vfine (RJC/2219)	2019	\$21.00	\$7.50
0454	O	#73 + #78 + #82a Xfine (RJC/2219)	2019	\$8.85	\$3.00
PALAU					
0455	**	12 Different stamp booklets Xfine; NH; Face value = \$30.25 (BAH/2220)	N/A	\$50.00+	\$10.00
PAPUA NEW GUINEA					
0456	O	#209-24; Complete set Xfine (RJC/2219)	2022	\$24.30	\$9.00
SINGAPORE					
0457	O	#40-42 Vfine (RJC/2219)	2022	\$13.40	\$4.00
0458	**	#775c Vfine; OG; NH Souvenir sheet (RJC/2219)	2019	\$12.00	\$4.00
ST. VINCENT					
0459	O	14 early stamps; None are ID'd by the Vendor; however, all appear to be pre-1900. Worth a close review for possible gems; Average-Fine; Some faults (BAH/2220)	2022	N/A	\$15.00
VENEZUELA					
0460	O	#162a Vfine; NG; HR; Inverted overprint (HMK/2222)	2022	\$9.25	\$1.00

AND WE ARE PAU!

Results of the March 14, 2022 Auction—Lots not listed are passed lots.

0301-\$1.00; 0303-\$190.00; 0308-\$28.50; 0309-\$1.00; 0310-\$11.00; 0313-\$18.00; 0314-\$40.00; 0315-\$55.00; 0316-\$50.00; 0321-\$180.00; 0322-\$30.00; 0326-\$40.00; 0329-\$2.50; 0330-\$5.50; 0331-\$50.00; 0332-\$25.00; 0333-\$60.00; 0334-\$40.00; 0335-\$2.00; 0336-\$7.50; 0337-\$5.50; 0338-\$2.00; 0339-\$1.00; 0341-\$1.00; 0342-\$3.75; 0346-\$1.00; 0348-\$2.00; 0351-\$5.50; 0354-\$13.00; 0355-\$11.00; 0356-\$16.00; 0357-\$21.00



0445



0446



0447



0449



0450



0451



0448




0452



0453



0454



PALAU

\$4-50

Ten 45c stamps
for
International
Air Mail Letters

EX 0455



0456



0457



0458



WE SELL *Hawaii!!*

OUR WEBSITE OF HAWAII ONLY:
www.vogtstamps.com

Stamps, Covers, Postcards, Flight Covers, Documents, Coins, Currency, Paper Ephemera, Autographs, Memorabilia, Photographs, Kahului Railroad. **In short, nearly everything!**

**FROM RARITIES TO COMMON
 GEMS TO NOT
 (MANY NOT ON THE MARKET
 FOR HALF A CENTURY!)**



Rare 66C Block



Honolulu Straight Line Cancel

VOGT STAMPS - HAWAII

650-344-3401 phone
 650-401-5530 fax
vogtstamps@aol.com

UNIVERSITY COINS & COLLECTIBLES

**2570 S. Beretania St.
Suite 103
Honolulu, HI 96826**

Phone: (808) 949-5781

- **BUY, SELL & CONSIGNMENTS**
- **BID BOARD**
- **TRADE NIGHTS**

**Open Monday - Saturday
11:00 AM - 5:00 PM**

HAWAII

STAMPS, COVERS, PROOFS, ESSAYS
BUYING & SELLING



**Hawaii #78, Gutter Specimen Block
12 Cent Blue, 1894, World Class Rarity**

PACIFIC MIDWEST CO.

**P.O. Box 730818
San Jose, CA 95173
408-532-7100**

EMAIL: GARYUCB@AOL.COM

WE ARE A WORLD CLASS HAWAIIAN DEALER

ASDA APS HAWAIIAN PHILATELIC SOCIETY CHINA STAMP SOCIETY

Hawaiian Philatelic Society
 P O Box 10115
 Honolulu, Hawaii 96816-0115

I wish to submit the following bids for the Hawaiian Philatelic Society auction

held on: _____

Signature: _____

Print Name: _____

Address: _____

City: _____

State: _____ Zip: _____

Lot	Amount	HPS	Lot	Amount	HPS	Lot	Amount	HPS	Lot	Amount	HPS

Bidding Increments
 0.25 to 5.00 by 0.25
 5.00 to 10.00 by 0.50
 10.00 to 25.00 by 1.00
 25.00 to 50.00 by 2.50
 50.00 to 100.00 by 5.00
 100.00 and up by 10.00

Must be a member to bid in the Auction

HAWAIIAN PHILATELIC SOCIETY
 P.O. Box 10115
 Honolulu, Hawaii 96816-0115
 ADDRESS SERVICE REQUESTED

