



# HAWAIIAN PHILATELIC SOCIETY



Affiliate #136

ORGANIZED 1911

P.O. Box 10115, Honolulu, HI 96816-0115 USA

WEB SITE: hpshawaii.com

EMAIL - hiphilsoc@gmail.com

OCTOBER 2019

2020 REGULAR MEMBERSHIP FEES ARE DUE OCTOBER 1, 2019. DUES REMAIN AT \$24.00USD PER YEAR. PAY BY CHECK OR MONEY ORDER (NO CASH, CREDIT CARDS OR ELECTRONIC PAYMENTS). MAIL FUNDS TO:

HPS, P.O. BOX 10115, HONOLULU, HAWAII 96816-0115

Due to increased international mailing and general printing costs, the Board voted to provide two renewal options for International Members: (1) agree to accept the monthly bulletin electronically and continue to receive a hard copy of the Po'Oleka Journal in the mail for the continued sum of \$24.00 per year or (2) choose to receive the monthly bulletin and Po'Oleka via mail (both mailed to the member in hard copy) for \$40.00 per year. Please contact the Society by mail with the appropriate membership renewal of \$24.00 or \$40.00. Please include your email address should you decide to receive the monthly bulletin electronically. Mahalo for your continued support of the Society.

## CALENDAR OF FUTURE EVENTS

|                     |             |                                |  |
|---------------------|-------------|--------------------------------|--|
| October 4-6, 2019   |             | SESCAL 2019/HPS "Meet & Greet" | 2000 E. Convention Center Way, Ontario, CA |
| October 6, 2019     | 10AM-4:30PM | Wiki Wiki One Day Vintage Show | Neal S. Blaisdell Center, Honolulu, HI     |
| October 7, 2019     | 2 -4PM      | HPS Executive Board Meeting    | Zippy's Kahala                             |
| October 14, 2019    | 7:30-9:30PM | HPS General Meeting & Auction  | St. Louis Alumni Association               |
| October 25-27, 2019 | Times Vary  | Hawaii Coin/Stamp Show         | Hawaii Convention Center, Honolulu, HI     |
| November 4, 2019    | 2-4PM       | HPS Executive Board Meeting    | Zippy's Kahala                             |
| November 11, 2019   | 7:30-9:30PM | HPS General Meeting & Auction  | St. Louis Alumni Association               |

NOTE: St. Louis Alumni Association Club House is located at 925 Isenberg Street, Honolulu, Hawaii

## SESCAL 2019

SESCAL 2019 October 4-6, 2000 East Convention Center Way, Ontario, CA 91764. The Annual HPS "Meet & Greet" will be held on Saturday, October 5<sup>th</sup> from 4-6PM in meeting room 106. Richard Malmgren will present on "Hawaiian Foreign Mail". Additionally, Fred Gregory will be presenting "Volcano Road – Post Office and Postal History" on Sunday the 6th from 10-12Noon. All members and guests are invited to attend both presentations.

### Results of the September 9, 2019 Auction – Lots not listed are passed lots

0902-\$17.00; 0905-\$40.00; 0906-\$35.00; 0907-\$1.25; 0908-\$32.50; 0911-\$10.00; 0912-\$9.50; 0914-\$14.00; 0916-\$3.25; 0918-\$25.00; 0919-\$80.00; 0922-\$22.00; 0927-\$10.00; 0928-\$20.00; 0929-\$12.00; 0930-\$25.00; 0934-\$65.00; 0935-\$40.00; 0936-\$30.00; 0937-\$25.00; 0938-\$200.00; 0939-\$25.00; 0940-\$70.00; 0941-\$75.00; 0942-\$47.50; 0943-\$350.00; 0945-\$16.00; 0946-\$2.00; 0947-\$5.50; 0948-\$4.00; 0951-\$5.50; 0952-\$16.00; 0953-\$27.50; 0954-\$25.00; 0955-\$24.00; 0956-\$19.00; 0957-\$390.00; 0958-\$5.50; 0959-\$1.50; 0960-\$2.25; 0963-\$1.00; 0964-\$5.50; 0966-\$2.00; 0967-\$8.50; 0968-\$4.25; 0969-\$11.00; 0970-\$2.00; 0971-\$0.75; 0975-\$0.75; 0976-\$20.00; 0977-\$21.00; 0979-\$2.75; 0980-\$2.75; 0981-\$1.00; 0983-\$5.50; 0987-\$2.25; 0988-\$6.50; 0989-\$42.50; 0990-\$5.00

E KOMO MAI – Professor Dr. Hin-Yeung Lee, Macau and Edward Anderson, Spokane, WA

| Lot #                           | * / O | DESCRIPTIONS: (####) = VENDOR CODE; (*) = UNUSED; (O) = USED; (**) = UNUSED/NEVER HINGED; (OG) = ORIGINAL GUM; (DG) = DISTURBED GUM | CAT YEAR | CAT OR RETAIL | UPSET    |
|---------------------------------|-------|---|----------|---------------|----------|
| <b>UNITED STATES OF AMERICA</b> |       |   |          |               |          |
| 1001                            | O     | #37 Vfine; Red Town Cancel; Reperfed at Right (PRL/1967)  | 2017     | \$400.00      | \$150.00 |
| 1002                            | **    | #78p Xfine; NH; Plate Proof on Card (SAI/1963)  | 2019     | \$75.00       | \$27.50  |
| 1003                            | O     | #160 Vfine; Neat Foreign Mail Cancel (PRL/1967)   | 2017     | \$90.00       | \$45.00  |
| 1004                            | **    | #160P4 Vfine; NH; Plate Proof on Card (SAI/1963)  | 2019     | \$20.00       | \$8.00   |
| 1005                            | *     | #215 F-Vfine; OG; HR (HMK/1966)   | 2019     | \$180.00      | \$35.00  |
| 1006                            | *     | #222 F-Vfine; OG; LH (HMK/1966)   | 2019     | \$80.00       | \$20.00  |
| 1007                            | *     | #229 Xfine; Well Centered; OG; LH; Hinge Thin; Fresh Stamp (PRL/1967)   | 2017     | \$475.00      | \$120.00 |
| 1008                            | *     | #230 F-Vfine; OG; LH (HMK/1966)   | 2019     | \$14.00       | \$3.00   |
| 1009                            | **    | #231 Vfine; OG; NH (HMK/1966)   | 2019     | \$31.00       | \$6.00   |
| 1010                            | *     | #232 F-Vfine; OG; LH (HMK/1966)   | 2019     | \$50.00       | \$12.50  |
| 1011                            | *     | #234 Fine; OG/DG; NH; Slight Gum Disturbance UR (HMK/1966)  | 2019     | \$50.00       | \$12.50  |
| 1012                            | *     | #235 F-Vfine; OG; LH (HMK/1966)   | 2019     | \$50.00       | \$12.50  |
| 1013                            | *     | #236 F-Vfine; OG; LH (HMK/1966)   | 2019     | \$47.50       | \$12.00  |
| 1014                            | **    | #279 Vertical Strip/3; Fine; OG; NH; Plate # w/imprint (HMK/1965)   | 2019     | \$85.00       | \$20.00  |
| 1015                            | **    | #297 Fine; OG; NH HMK/1966)   | 2019     | \$180.00      | \$35.00  |
| 1016                            | O     | #298 Vfine; Lightly Cancelled (BAH/1962)  | 2019     | \$50.00       | \$7.00   |
| 1017                            | *     | #302 Vfine; OG; LH (PRL/1967)   | 2017     | \$50.00       | \$25.00  |
| 1018                            | *     | #304 Xfine; OG; HR; Beautiful Copy (SAI/1963)   | 2019     | \$60.00       | \$20.00  |
| 1019                            | **    | #308 Vfine; OG/ NH; Very Small Gum Skips LL; Otherwise MNH (SAI/1963)   | 2019     | \$40.00       | \$18.00  |
| 1020                            | O     | #311 Xfine; Philadelphia Pre-Cancel (PRL/1967)  | 2017     | \$95.00       | \$35.00  |
| 1021                            | **    | #384 Blk/8 F-Vfine; OG/ NH; Small Pencil Mark on Back; Cat. as 4/NH Horizontal Pairs (BAH/1962)                                     | 2019     | \$88.00       | \$15.00  |
| 1022                            | O     | #524 Vfine (PRL/1967)   | 2017     | \$35.00       | \$15.00  |
| 1023                            | **    | #553 + 554 +562 F-Vfine; OG; NH (HMK/1965)  | 2019     | \$36.00       | \$6.00   |
| 1024                            | **    | #554 +563 + 632 F-Vfine; OG; NH (HMK/1966)  | 2019     | \$5.60        | \$1.00   |
| 1025                            | **    | #565 Vfine; OG; NH (BAH/1962)   | 2019     | \$9.50        | \$2.00   |
| 1026                            | *     | #568 Vfine; OG; LH (HMK/1966)   | 2019     | \$13.50       | \$3.00   |
| 1027                            | **    | #577 Vfine + 606 F-Vfine; OG; NH (HMK/1965)   | 2019     | \$3.70        | \$1.00   |
| 1028                            | **    | #598 + 807 (2) + 842 + 842 LP Fine + Vfine; OG; NH (HMK/1965)   | 2019     | \$4.80        | \$0.00   |
| 1029                            | **    | #614-16 (3) F-Vfine; OG; NH (HML/1966)  | 2019     | \$38.75       | \$10.00  |
| 1030                            | **    | #628 F-Vfine; OG; NH (HMK/1966)   | 2019     | \$8.50        | \$2.00   |
| 1031                            | **    | #656 Pair Fine; OG; NH (HMK/1966)   | 2019     | \$45.00       | \$10.00  |
| 1032                            | **    | #669 + 670 F-Vfine; OG; NH (HMK/1965)   | 2019     | \$12.50       | \$3.00   |
| 1033                            | O     | #776 Blk/4 Fine; Large KAHULUI, HAWAII cds (SAI/1963)   | 2019     | \$1.00        | \$2.25   |



1001



1002



1003



1004



1005



1006



1007



1008



1009



1010



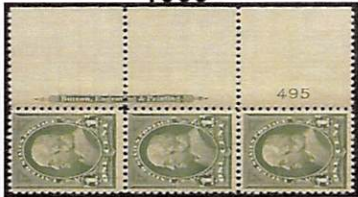
1011



1012



1013



1014



1015



1016



1017



1018



1019



1021



1023



1020



1024



1022



1025



1026



1027



EX 1028



1029



1030



1031



1032



1033

| Lot #  | * / O | DESCRIPTIONS: (####) = VENDOR CODE; (*) = UNUSED; (O) = USED; (**) = UNUSED/NEVER HINGED; (OG) = ORIGINAL GUM; (DG) = DISTURBED GUM | CAT YEAR | CAT OR RETAIL | UPSET    |
|--|-------|---|----------|---------------|----------|
| 1034   | **    | #1053 Plate # Single Xfine; OG; NH; Very Fresh (SAI/1963)   | 2019     | \$50.00       | \$20.00  |
| 1035   | **    | Assortment of Loose Stamps; Face Value \$60.00; Includes Legends of The West SS, \$2 Madison Sheet (PRL/1967)                       | N/A      | \$60.00       | \$40.00  |
| <b>U.S. Airmail, Special Delivery, Postage Due, Official</b> |       |   |          |               |          |
| 1036   | **    | C2 Xfine; OG; NH; Splendid Fresh Stamp (PRL/1967)   | 2017     | \$130.00      | \$100.00 |
| 1037   | *     | E17 Single w/Plate Number; Xfine; OG; LH; PF Cert #190098 (BAH/1962)  | 2019     | \$0.60        | \$1.00   |
| 1038   | O     | J64 Blk/4 Vfine; Precancel "Honolulu, Hawaii" (SAI/1963)  | 2019     | \$3.20        | \$2.50   |
| 1039   | **    | O129 Plate Blk/4, Plates 1-4; Vfine; OG; NH (BAH/1962)  | 2019     | \$9.00        | \$2.00   |
| <b>U.S. Envelopes</b>  |       |   |          |               |          |
| 1040   | *     | U72 Cut Square Vfine; Pencil Mark on Back (PRL/1962)  | 2017     | \$100.00      | \$30.00  |
| 1041   | O     | U582 Entire Vfine; New Bedford 1977 SEAPEX Cover (BAH/1962)   | N/A      | N/A           | \$1.00   |
| <b>U.S. Revenue</b>  |       |   |          |               |          |
| 1042   | O     | R12 Average (SAI/1964)  | 2019     | \$55.00       | \$8.00   |
| 1043   | O     | R27a F-Vfine; Very Tiny Tear UR Margin (SAI/1964)   | 2019     | \$10.00       | \$1.50   |
| 1044   | O     | R40b Average; Manuscript; Dtd "July 17th, 1863" (SAI/1964)  | 2019     | \$14.00       | \$3.50   |
| 1045   | O     | R43a Vfine; Light Wrinkle Right Margin; Dtd "March 26, 1863" (SAI/1964)   | 2019     | \$300.00      | \$80.00  |
| 1046   | O     | R45a F-Vfine; 3½ Margins; Dtd "March 31, 1863" (SAI/1964)   | 2019     | \$22.50       | \$7.50   |
| 1047   | O     | R49a Vfine; 4 Margins; Dtd "March 4th, 1863"; Very Light Stain Left Margin (SAI/1964)   | 2019     | \$35.00       | \$9.50   |
| 1048   | O     | R57a F-Vfine; Repaired (SAI/1964)   | 2019     | \$35.00       | \$4.50   |
| 1049   | O     | R69a Vfine; Manuscript; Dtd "26 May '63" Repaired LL (SAI/1964)   | 2019     | \$17.00       | \$3.75   |
| 1050   | O     | R72a F-Vfine; Very Light Manuscript; 4 Margins Except LR (SAI/1964)   | 2019     | \$47.50       | \$15.00  |
| 1051   | O     | R74a Vfine; Circular Hand Stamp; Dtd "Jul 10, 1866", SF, Calif (SAI/1964)   | 2019     | \$350.00      | \$100.00 |
| 1052   | O     | R81a F-Vfine; Small Hinge Thin; Pressed Crease; Manuscript Dtd "July 21, 1863" (SAI/1964)   | 2019     | \$250.00      | \$55.00  |
| 1053   | O     | R82a F-Vfine; Hole; Thin; Very Light Manuscript Cancel (SAI/1964)   | 2019     | \$150.00      | \$12.00  |
| 1054   | O     | R86a F-Vfine; Entirely Rebacked (SAI/1964)  | 2019     | \$200.00      | \$8.50   |
| 1055   | O     | R91a Average; 3-Margins; Repaired UL (SAI/1964)   | 2019     | \$200.00      | \$16.00  |
| 1056   | O     | R104TC Xfine; Trial Color Proof (h) = Dark Blue (SAI/1963)  | 2019     | \$70.00       | \$22.00  |
| 1057   | O     | R122 Avg; Oval Blue Hand Stamp; Uncut w/Visible Silk Paper (SAI/1964)   | 2019     | \$500.00      | \$95.00  |
| <b>U.S. Waterfowl Stamp</b>                                  |       |   |          |               |          |
| 1058   | **    | RW39 Vfine; NH (BAH/1962)   | 2019     | \$30.00       | \$5.00   |
| <b>Confederate States of America</b>                         |       |   |          |               |          |
| 1059   | *     | #11 (4 Diff Shades); 1 Fake Perf; F-Vfine; PG/NG (BAH/1962)   | 2019     | N/A           | \$15.00  |
| 1060   | *     | #14 Vfine; NG; (BAH/1962)   | 2019     | \$60.00       | \$7.00   |
| <b>Hawaii</b>  |       |   |          |               |          |
| 1061   | O     | #21 Counterfeit F-Vfine; HPS Cert. #2331 (PRL/1967)   | 2017     | N/A           | \$20.00  |
| 1062   | O     | F-Vfine; Plate 9A, Type VII, Pos. 3; HPS Cert. #3034; 4-Margin Thins; Tears (HMK/1965)  | 2019     | \$700.00      | \$150.00 |
| 1063   | *     | #23 Vfine; NG; Plate 8A, Type VII, Pos. 8; Horizontal Crease; Minor Thinning and Soiling at Top; PSAG Cert. #0571174 (FSS/1968)     | 2019     | \$300.00      | \$120.00 |
| 1064   | O     | #24 Xfine; Type 5, Pos. V; Fake Cancellation; HPS Cert. #2332 (PRL/1967)  | 2017     | \$350.00      | \$70.00  |
| 1065   | O     | #25 Xfine; Plate 11-A, Type 2, Pos. 10; Fake Cancellation, Altered; HPS Cert. #2337 (PRL/1967)                                      | 2017     | \$350.00      | \$70.00  |
| 1066   | *     | #27 Fine; OG; HR; Missing Corner; PSE Cert. #01274935 (FSS/1968)  | 2019     | \$350.00      | \$70.00  |
| 1067   | *     | #28 F-Vfine; NG; Thins; HPS Cert. #2978 (FSS/1968)  | 2017     | \$325.00      | \$100.00 |
| 1068   | O     | #28 F-Vfine; Thins; Creases; HR; HPS Cert. #2769 (FSS/1968)   | 2019     | \$325.00      | \$70.00  |
| 1069   | **    | #55 Vfine; OG; NH (HMK/1965)  | 2019     | \$4.00        | \$2.00   |
| 1070   | **    | #58 Fine; OG; NH (HMK/1965)   | 2019     | \$32.00       | \$8.00   |
| 1071   | **    | #61 Fine; OG; NH (HMK/1965)   | 2019     | \$30.00       | \$8.00   |



1034



1035



1036



1038



EX 1039



1037



1040



1041



1042



1043



1044



1045



1046



1047



1048



1049



1050



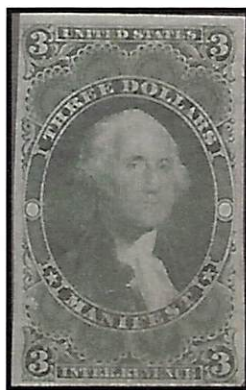
1051



1052



1053



1054



1055



1057



1056



1058



EX 1059



1060



1061



1062



1063



1064



1065



1066



1067



1068



1069



1070



1071

| Lot # | * / O | DESCRIPTIONS: (####) = VENDOR CODE; (*) = UNUSED; (O) = USED; (**) = UNUSED/NEVER HINGED; (OG) = ORIGINAL GUM; (DG) = DISTURBED GUM   | CAT YEAR | CAT OR RETAIL | UPSET    |
|-------|-------|---|----------|---------------|----------|
| 1072  | **    | #74 + 75 F-Vfine; OG; NH (HMK/1965)   | 2019     | \$8.00        | \$3.00   |
| 1073  | *     | #81 ABN Specimen w/Hole Punch; F-VF; NG; HPS Cert. #2947 (FSS/1968)   | 2019     | \$300.00      | \$175.00 |
|       |       | <b>Hawaii Envelopes</b>   |          |               |          |
| 1074  | O     | U4 Entire F-Vfine; 1891 Cover to Peekskill, NY (SAI/1963)   | 2019     | \$30.00       | \$7.00   |
| 1075  | **    | U11 Cut Square; Vfine; NH; Clean (SAI/1963)   | 2019     | \$4.00        | \$1.50   |
|       |       | <b>Hawaiiana</b>  |          |               |          |
| 1076  | O     | #799 On Cover; Fine; FDC King Kamehameha; Oct 18, 1937 (SAI/1963)   | 2019     | \$0.25        | \$0.75   |
| 1077  | O     | #806 On Cover Vfine; 1951 Cover Commemorating First Day of Use of Hawaii's First Postage Stamp; Nice Cachet, Slogan Cancel (SAI/1963) | 2019     | \$0.25        | \$2.00   |
| 1078  | O     | #997 On Cover Vfine; Lovely HAPEX Cover 1951 (SAI/1963)   | 2019     | \$0.25        | \$2.00   |
| 1079  | O     | C46 On Cover Vfine; Clean Artcraft FDC (SAI/1963)   | 2019     | \$1.25        | \$2.75   |
| 1080  | O     | Post Card F-Vfine; Island Curio #151 "Surfboard Rider, Hawaiian Islands; Dtd "Oct 3, 1911"; Minor Toning on Back (HMK/1965)           | N/A      | \$10.00       | \$3.00   |
| 1081  | **    | Post Card Vfine; NH; "Matson Lines Luxury Liner Lurline" (HMK/1965)   | N/A      | \$5.00        | \$1.00   |
| 1082  | **    | Post Card Xfine; "Matson Lines Mariposa" Unused; NH (HMK/1965)  | N/A      | \$5.00        | \$1.00   |
| 1083  | O     | 1976 Cover Celebrating Hawaii-Tahiti Voyage; Signed and Produced by HPS (SAI/1963)  | N/A      | \$10.00       | \$2.75   |
|       |       | <b>Australia</b>  |          |               |          |
| 1084  | O     | #218-21 (4 Singles) F-Vfine; (BAH/1962)   | 2017     | \$37.35       | \$5.00   |
|       |       | <b>Canada</b>   |          |               |          |
| 1085  | **    | #87 Xfine; OG; NH; Small Crease TR; w/PF Cert. #260890 (BAH/1962)   | 2017     | \$45.00       | \$7.00   |
|       |       | <b>Cook Islands</b>   |          |               |          |
| 1086  | O     | #292-96 (5 Singles) Vfine; FDC Christmas 1970 (BAH/1962)  | 2017     | \$1.30        | \$1.00   |
|       |       | <b>Guam</b>   |          |               |          |
| 1087  | *     | #1, 2, 5, M5 Fine; NG (BAH/1962)  | 2019     | \$72.75       | \$7.00   |
| 1088  | *     | #11 Xfine; OG; LH; Copy of APS Cert. for Original Blk/4 (PRL/1967)  | 2017     | \$350.00      | \$240.00 |
|       |       | <b>Nauru</b>  |          |               |          |
| 1089  | **    | #72 ~ 85 (#75 Missing) Xfine; OG; NH (BAH/1962)   | 2017     | \$9.35        | \$2.50   |
|       |       | <b>Philippines</b>  |          |               |          |
| 1090  | *     | #220 Xfine; OG; LH; Very Nicely Centered (PRL/1967)   | 2017     | \$35.00       | \$30.00  |
| 1091  | *     | #224 Vfine; DG; LH; APS Cert. #213824 (PRL/1967)  | 2017     | \$350.00      | \$200.00 |
| 1092  | **    | #462 (4-Pane Booklet) Vfine; Burst; OG; NH (BAH/1962)   | 2017     | \$24.00       | \$10.00  |



1072



1073



1075



1085



1074



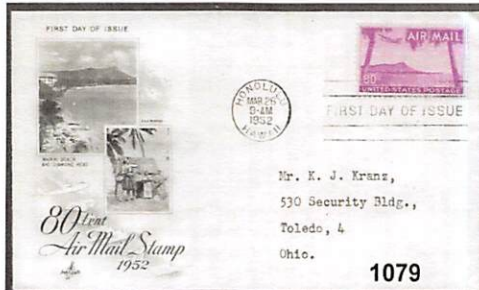
1076



1077



1078



1079



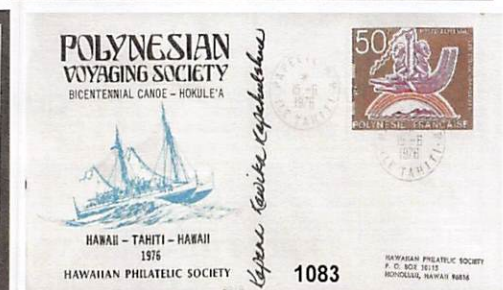
1080



1081



1082



1083



1084



1085

1087



1086

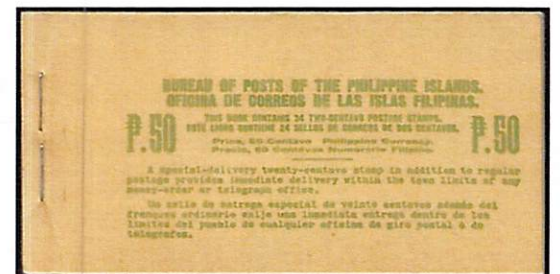


1088

1089

1090

1091



1092

| Lot #         | */O | DESCRIPTIONS: (####) = VENDOR CODE; (*) = UNUSED; (O) = USED; (**) = UNUSED/NEVER HINGED; (OG) = ORIGINAL GUM; (DG) = DISTURBED GUM | CAT YEAR | CAT OR RETAIL | UPSET  |
|---------------|-----|---|----------|---------------|--------|
| <b>Ryukyu</b> |     |   |          |               |        |
| 1093          | *   | #48 Blk/6 Fine; NG as Issued (HMK/1966)   | 2019     | \$12.00       | \$3.00 |
| <b>Tonga</b>  |     |   |          |               |        |
| 1094          | O   | 4 Covers, Crease; Sl. Tropic Stain; Priced Stamps Only (HMK/1965)   | 2017     | \$6.55        | \$0.00 |
| 1095          | O   | #226 + 228 On Cover Vfine; Matson Corner Card; Tin Can Island Canoe Mail (HMK/1965)   | 2017     | \$6.00        | \$3.00 |

**AND WE ARE PAU!**

HPS Members receive a 20% discount and time payments are available

**WE BUY AND SELL  
ALL HAWAII!  
OUR EXTENSIVE WEBSITE OF HAWAII ONLY:**

[www.vogtstamps.com](http://www.vogtstamps.com)

Stamps, Covers, Postcards, Flight Covers, Documents, Coins, Currency, Paper Ephemera, Autographs, Photographs, Memorabilia, Kahului Railroad. **In short, nearly everything!**

**FROM RARITIES TO COMMON  
GEMS TO NOT**

(MANY NOT ON THE MARKET FOR HALF A CENTURY!)



**Shows we will be attending with our full Hawaiian stock:**

- WESTPEX**, April, Burlingame, CA
- PIPEX**, May, Portland, OR
- APS**, August, Omaha, NE
- SESCAL**, October, Ontario, CA
- Honolulu Stamp and Coin Show**, TBA

650-344-3401 Phone  
650-401-5530 Fax  
vogtstamps@aol.com

# VOGTSTAMPS-HAWAII





1093



1094 A



1094 B



1094 C



1094 D



1095

# HAWAII

**STAMPS, COVERS, PROOFS, ESSAYS  
BUYING & SELLING**



**Hawaii #78, Gutter Specimen Block  
12 Cent Blue, 1894, World Class Rarity**

**PACIFIC MIDWEST CO.**

**P.O. Box 730818**

**San Jose, CA 95173**

**408-532-7100**

**EMAIL: GARYUCB@AOL.COM**

**WE ARE A WORLD CLASS HAWAIIAN DEALER**

**ASDA APS HAWAIIAN PHILATELIC SOCIETY CHINA STAMP SOCIETY**

Hawaiian Philatelic Society  
P O Box 10115  
Honolulu, Hawaii 96816-0115

I wish to submit the following bids for the Hawaiian Philatelic Society auction

held on: \_\_\_\_\_

Signature: \_\_\_\_\_

Print Name: \_\_\_\_\_ Date: \_\_\_\_\_

Address: \_\_\_\_\_ Telephone: \_\_\_\_\_

City: \_\_\_\_\_ State: \_\_\_\_\_ Zip: \_\_\_\_\_

| Lot | Amount | HPS | Lot | Amount | HPS | Lot | Amount | HPS | Lot | Amount | HPS |
|-----|--------|-----|-----|--------|-----|-----|--------|-----|-----|--------|-----|
|     |        |     |     |        |     |     |        |     |     |        |     |
|     |        |     |     |        |     |     |        |     |     |        |     |
|     |        |     |     |        |     |     |        |     |     |        |     |
|     |        |     |     |        |     |     |        |     |     |        |     |
|     |        |     |     |        |     |     |        |     |     |        |     |
|     |        |     |     |        |     |     |        |     |     |        |     |
|     |        |     |     |        |     |     |        |     |     |        |     |
|     |        |     |     |        |     |     |        |     |     |        |     |
|     |        |     |     |        |     |     |        |     |     |        |     |
|     |        |     |     |        |     |     |        |     |     |        |     |
|     |        |     |     |        |     |     |        |     |     |        |     |
|     |        |     |     |        |     |     |        |     |     |        |     |
|     |        |     |     |        |     |     |        |     |     |        |     |
|     |        |     |     |        |     |     |        |     |     |        |     |
|     |        |     |     |        |     |     |        |     |     |        |     |
|     |        |     |     |        |     |     |        |     |     |        |     |
|     |        |     |     |        |     |     |        |     |     |        |     |
|     |        |     |     |        |     |     |        |     |     |        |     |
|     |        |     |     |        |     |     |        |     |     |        |     |
|     |        |     |     |        |     |     |        |     |     |        |     |
|     |        |     |     |        |     |     |        |     |     |        |     |
|     |        |     |     |        |     |     |        |     |     |        |     |
|     |        |     |     |        |     |     |        |     |     |        |     |
|     |        |     |     |        |     |     |        |     |     |        |     |
|     |        |     |     |        |     |     |        |     |     |        |     |
|     |        |     |     |        |     |     |        |     |     |        |     |
|     |        |     |     |        |     |     |        |     |     |        |     |
|     |        |     |     |        |     |     |        |     |     |        |     |
|     |        |     |     |        |     |     |        |     |     |        |     |
|     |        |     |     |        |     |     |        |     |     |        |     |
|     |        |     |     |        |     |     |        |     |     |        |     |
|     |        |     |     |        |     |     |        |     |     |        |     |
|     |        |     |     |        |     |     |        |     |     |        |     |
|     |        |     |     |        |     |     |        |     |     |        |     |

Bidding Increments

|                        |                         |
|------------------------|-------------------------|
| 0.25 to 5.00 by 0.25   | 25.00 to 50.00 by 2.50  |
| 5.00 to 10.00 by 0.50  | 50.00 to 100.00 by 5.00 |
| 10.00 to 25.00 by 1.00 | 100.00 and up by 10.00  |

Must be a member to bid in the Auction

HAWAIIAN PHILATELIC SOCIETY  
P.O. Box 10115  
Honolulu, Hawaii 96816-0115

ADDRESS SERVICE REQUESTED

